

D-Dome Railless² System

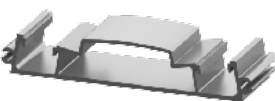
Dome R² Peak



Part Number	Description	Specs
4000592	Dome R ² Peak	Material: Aluminum

The Peak is the center piece that allows the modules to be placed in a tilt position.

Dome R² Base



Part Number	Description	Specs
4000593	Dome R ² Base	Material: Aluminum

The Base is the piece that the low end of the modules attach to.

Dome R² Roof Protection Mat



Part Number	Description	Specs
4000594	Dome R ² Roof Protection Mat	Material: Recycled Rubber

This is what the Dome R2 Base and Peak rests on so that the roof is protected from the metal.

Aluminum End Clamp Set



Part Number	Description	Specs	Box Qty	Pallet Qty
4005344	CrossRail EC Silver, AL 32-33mm	Material: Stainless Steel Finish: Mill or Black Hardware: Stainless Steel		
4005169	CrossRail EC Silver, AL 34-36mm			
4005290	CrossRail EC Silver, AL 37-38mm			
4005170	CrossRail EC Silver, AL 39-41mm			
4005291	CrossRail EC Silver, AL 42-44mm			
4005171	CrossRail EC Silver, AL 45-47mm			
4005292	CrossRail EC Silver, AL 48mm			
4005172	CrossRail EC Silver, AL 49-50mm		20	5,040

We have several different aluminum end clamps in order to fit different module frames. They range from 30-50 mm.

WEEB Clip BMC



Part Number	Description	Specs
4000469	WEEB Clip BMC	Material: Stainless Steel

This is an add on piece that attaches to an aluminum clamp to bond.

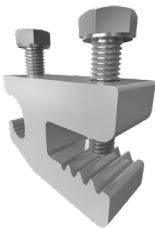
Dome Mid Clamp Set



Part Number	Description	Specs	Box Qty	Pallet Qty
4000603	DOME MC Silver, SS UL2703+ 30-33mm	Material: Stainless Steel Finish: Silver Hardware: Stainless Steel	20	5,880
4000604	DOME MC Silver, SS UL2703+ 34-39mm			
4000605	DOME MC Silver, SS UL2703+ 40-44mm			
4000606	DOME MC Silver, SS UL2703+ 45-50mm			

We have several different end clamps in order to fit different module frames. They range from 30-50 mm.

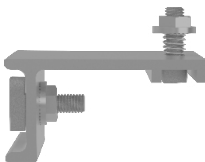
IlSCO Lug



Part Number	Description	Specs
4000960	ILSCO, SGB-4, 4-14 SOL-STR	Material: Tin Plated Aluminum Finish: Mill Hardware: Stainless Steel

Third-party Ground Lug made by ILSCO compatible with MiniRail XPress and Dome Railless² Systems.

Dome R² Optimizer Mounting Bracket Kit



Part Number	Description	Specs
4000646	Dome R ² Optimizer Mounting Bracket Kit	Material: Stainless Steel

This kit makes it possible to attach a microinverter or optimizer to the Dome Peak.

SYSTEM

PITCHED ROOF

CrossRail

Shared Rail

Tilt Up

MiniRail

FLAT ROOF

D-Dome R²

Tilt Up

GROUND MOUNTED

Ground Mount


ROOF ATTACHMENTS

TERMS AND CONDITIONS

CONTACT


D-Dome Railless² System

Dome R² Roof Spacer Pad

	Part Number	Description	Specs
	4000636	Dome R ² Roof Spacer Pad	Material: Recycled Rubber

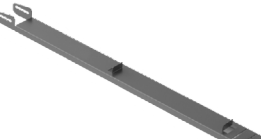
This piece is like a shim, it fits on the roof protection mat and allows the height of the peak or base to be adjusted to accommodate for undulations in the roof.

Dome R² Porter

	Part Number	Description	Specs	Box Qty	Pallet Qty
	4000568	Dome R ² Ballast Porter, 61-67in	Material: Aluminuml	20	5,880
	4000570	Dome R ² Ballast Porter, 74.5-80.5in			

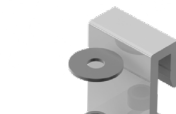
The Porters are placed parallel to each other to create a section for the ballast blocks to weigh down the system.

Dome R² Corner Strut

	Part Number	Description	Specs	Box Qty	Pallet Qty
	4000637	Dome R ² Corner Strut Kit	Material: Aluminuml	100	3,000

This piece adds rigidity to the corners of Dome R² arrays. It has a secondary function where it can be used to add more ballast blocks when necessary.

Dome R² Anchor Bracket

	Part Number	Description	Specs
	4000639	Dome R ² Anchor Bracket for Porter Kit	Material: Aluminum Hardware: Stainless Steel

Should you choose to anchor your Dome System, you may use our anchor bracket along with a third-party anchor base.

Eco Fast Eco65 with Porter Bracket

	Part Number	Description	Specs
	4001442	Eco Fasten Eco65 with Porter Bracket	Material: Aluminum Hardware: Stainless Steel

This is an optional third-party product that is used to secure the system to the roof if ballsting is not enough for your area.

OMG PowerGrip Plus with Porter Bracket

	Part Number	Description	Specs
	4000335	OMG PowerGrip Plus with Porter Bracket	Material: Aluminum Hardware: Stainless Steel

This is an optional third-party product that is used to secure the system to the roof if ballsting is not enough for your area.

References



► D-Dome installation on Stone Brewing Co. in Escondido, CA.