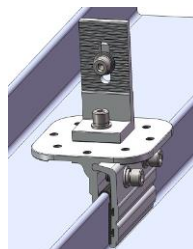


SolarRoof Klip-lok Interface for longline 305

- Assembly -



Install with Cross Connector Clamp



Install with Tin Interface

- Component -



Klip-lok Interface for longline 305

Part No.: ER-I-29/AU

- Technical Specification -

| | |
|----------------------|--|
| Roof Type | Longline 305 |
| Fixing Method | Fixing on crown/rib of metal sheet |
| Dimensions | L100mm*W100mm*H69.7mm |
| Weight | 0.400 kg |
| Packaging | 12 units per pack, 4 packs (48 units) per carton |
| Material | Main parts: AL6005-T5 Fasteners: SUS 304; Rubber Pad: EPDM |
| Color | Silver (anodized, no less than 10 µm) |
| Standard | AS NZS1170.2-2011 |

