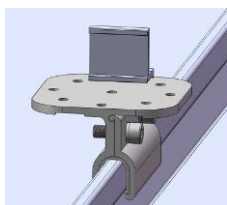
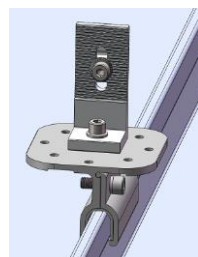


SolarRoof Klip-lok Interface for longline 305

- Assembly -



Install with Cross Connector Clamp



Install with Tin Interface

- Component -



Klip-lok Interface 406 with U-opening

Part No.: ER-I-32/AU

- Technical Specification -

Roof Type	Lysaght Klip-Lok 406
Fixing Method	Fixing on crown/rib of metal sheet
Dimensions	L100mm*W100mm*H57.9mm
Weight	0.342 kg
Packaging	18 units per pack, 4 packs (72 units) per carton
Material	Main parts: AL6005-T5 Fasteners: SUS 304; Rubber Pad: EPDM
Color	Silver (anodized, no less than 10 µm)
Standard	AS NZS1170.2-2011

