

ONE2

Second Seat

Suitable for use with the One2 stroller.
(sold separately)



0_{KG}

15_{KG}

(newborn - 3 years approx.)

**IMPORTANT KEEP THIS
BOOKLET IN A SAFE PLACE
FOR FUTURE REFERENCE**

Contents

About Your Second Seat

Warnings & Important Notes	03
Lift & Carry Correctly	04
What's in the Box	05
Second Seat Features	06
Configurations	07

Second Seat Operation

Adjusting the Backrest	12
Securing the Harness	13
Adjusting the Harness	14
Adjusting the Harness Height	14
Releasing the Harness	15

Care & Maintenance

Care & Maintenance	16
Warranty	19
Notes	22

Second Seat Assembly

Attaching the Canopy	08
Attaching the Wheel Guards	09
Attaching the Second Seat Unit	09
Attaching & Removing the Seat Extenders	11

WARNINGS

- **SECURE THE CHILD IN THE HARNESS AT ALL TIMES.**
 - **DO NOT USE ANY ACCESSORIES OTHER THAN THOSE APPROVED FOR USE WITH THIS STROLLER BY BRITAX.**
 - **IT IS UNSAFE TO USE ACCESSORIES NOT APPROVED FOR USE WITH THIS STROLLER.**
 - **THE MAXIMUM WEIGHT OF THE CHILD USING THIS SECOND SEAT IS NOT TO EXCEED 15KG.**
- FOR IMPORTANT NOTES AND WARNINGS ON ACCESSORIES – REFER TO THEIR INDIVIDUAL SECTIONS IN THIS BOOK OR THE INSTRUCTION MANUAL INCLUDED WITH THE INDIVIDUAL PRODUCTS. THE MAXIMUM WEIGHT VARIES FOR EACH ACCESSORY.**

IMPORTANT NOTES:

- **Do not use this second seat with any other models of stroller.**
- **The second seat must be correctly fitted and locked onto the stroller frame.**
- **The second seat can only be used in the forward facing position, connected to the rear of the stroller.**
- **Do not overload the stroller. Overloading will cause stroller to tip backwards.**
- **The One 2 second seat is designed to fit One 2 strollers only.**



This **CAUTION** symbol is shown at certain steps in this instruction manual to highlight the danger of being injured by moving parts.

Lift & Carry Correctly

The SMART lifting technique: This technique can be used to pick up small light loads from low levels.

Size up the load

- Assess the load (size, shape, and weight).
- Assess whether the load needs to be moved;
- Where is it going to be placed? Check that there are no obstructions;
- Assess whether mechanical or human assistance is required.

Move the load as close to the body as possible

- A load is heavier to lift or carry if it is not close to the body.
- The whole hand should be used to ensure a firm grip.

Always bend your knees

- Maintain balance.
- Keep feet apart and in a comfortable position.
- Minimise lower back bending.
- Bend knees preferable at as large an angle as possible but not at a right angle - use a semi-squat in preference to a full squat.

Raise the load with your legs

- Achieve the lift smoothly and without jerkiness.
- Maintain the normal curvature of the spine to allow the force of the load to be distributed evenly from the spine to the pelvis.

Turn your feet in the direction that you want to move the load.

- Avoid unnecessary bending, twisting, and reaching.
- Change direction by turning your feet and not your back.
- To set the load down, squat down, keep your head up and let your legs do the work.

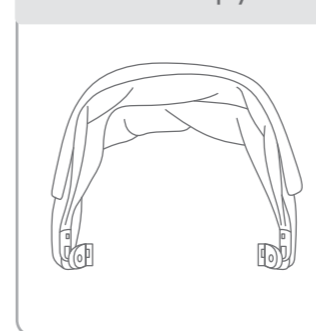
Remember to **THINK TALL** - chest lifted, shoulders relaxed, chin tucked in, and head level.

What's in the Box: Stroller Parts

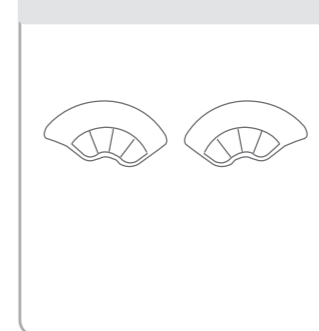
1 x Second Seat



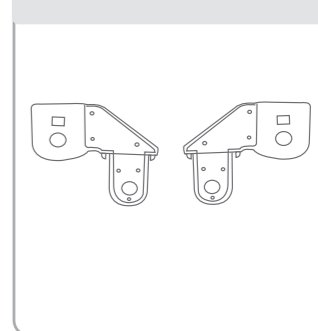
1 x Canopy

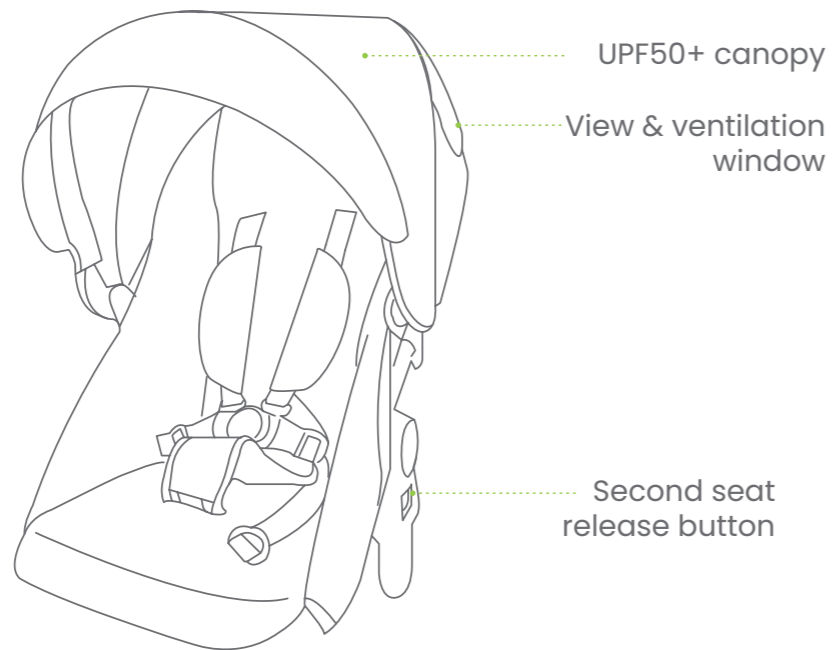


2 x Wheel Guards



2 x Seat Extenders

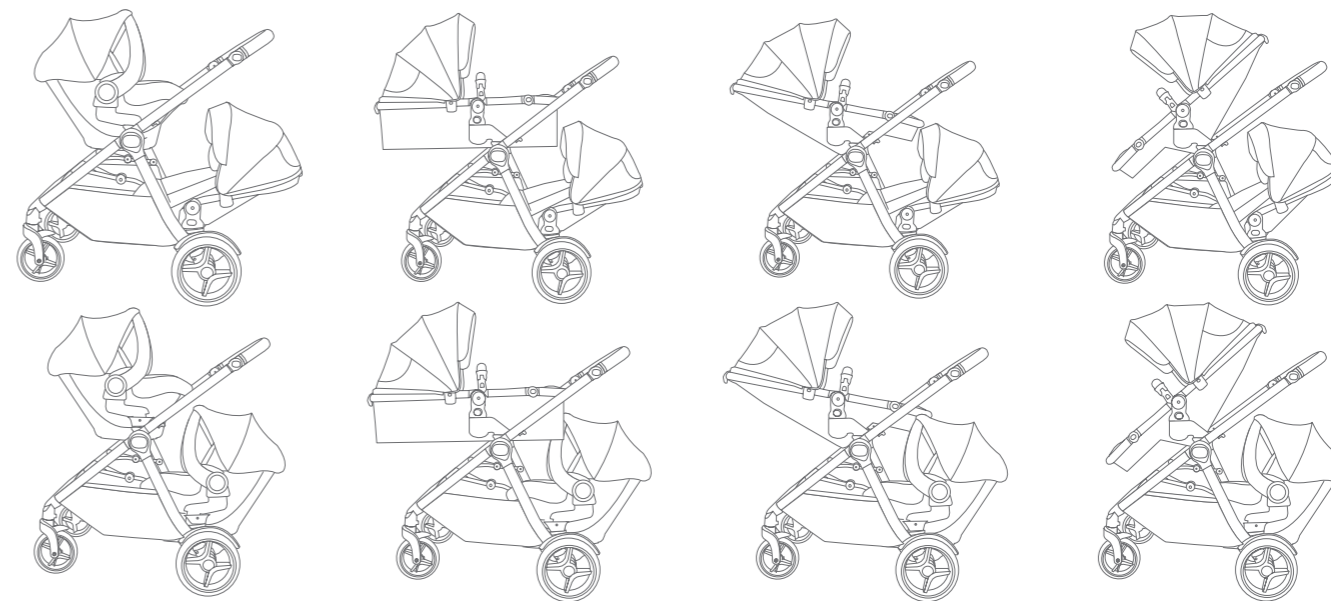




PLEASE NOTE: The One2 Second Seat has multiple configurations/modes and many adjustments to suit your growing family needs. Shown with optional accessories here (sold separately).

DO NOT exceed maximum weight limits defined in the Baby Capsule, Bassinet and Accessories instruction manuals.

The seat extenders **MUST** be used on the top seat when in tandem mode to create more space between the seats. Do not use the configuration shown here if there is not enough space for the lower child.



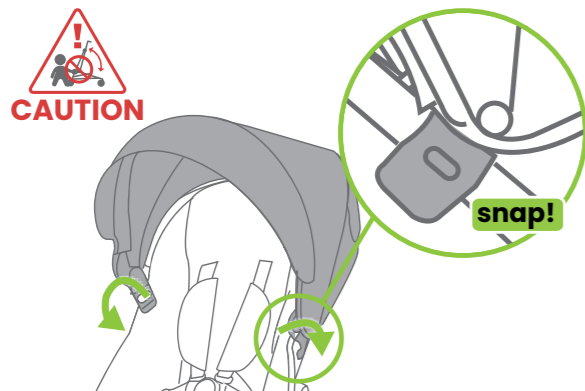
Second Seat Assembly

Attaching the Canopy

IMPORTANT NOTE:

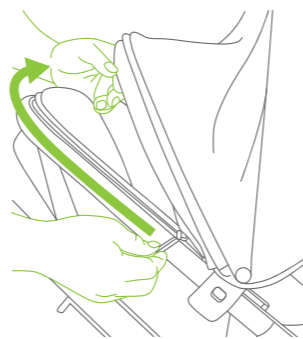
The sun is very strong. **DO NOT LEAVE YOUR CHILD EXPOSED TO THE SUN.** The canopy or hood on this product will not give your child total protection from the harmful rays of the sun.

A



Place the canopy on the second seat and push the clips on the sides of the canopy onto the second seat frame until they snap into place.

B



Attach the canopy to the seat unit with the zipper. There is a peek a boo window with magnetic closer for better ventilation.

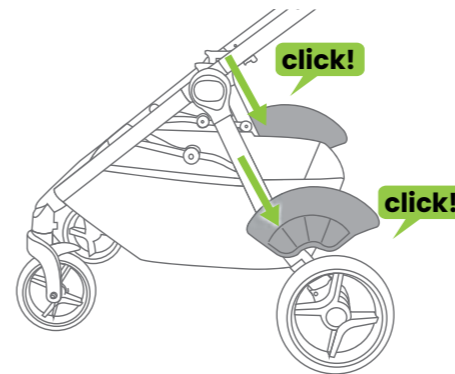
Second Seat Assembly

Attaching the Second Seat Unit

IMPORTANT NOTE:

PLEASE REFER TO PAGE 4 FOR SMART LIFTING TECHNIQUES.

- When fitting, opening, or folding the second seat, be aware of the danger of being injured by moving parts and locking devices during the process. Keep all hands and limbs clear of these parts.
- There is potential for fingers or parts of the body to be injured when the stroller is being folded or unfolded, due care should be exercised.
- Keep children clear of the stroller during folding of the stroller.



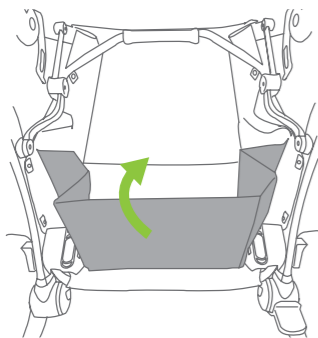
Slide each guard onto the mounting bracket above each rear wheel housing and push down until it locks into place. There is left and right wheel guards.

SAFETY WARNING: Before using the second seat, **the wheel guards must be installed.**

Second Seat Assembly

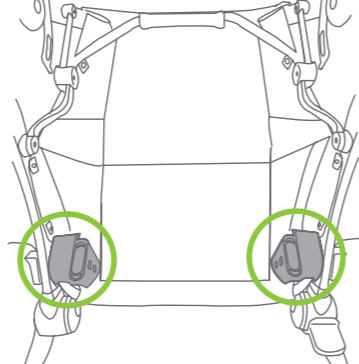
Attaching the Second Seat Unit

A



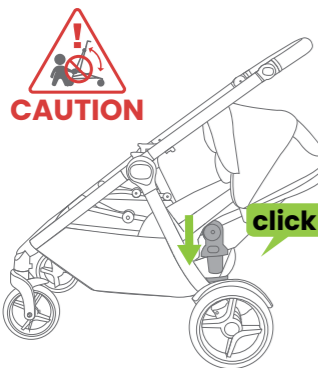
Fold the back of the storage basket down.

B



The frame sockets will now be visible.

C



Align the seat connectors to the frame sockets and push down until it locks.

Pull up on both sides of the seat to ensure the seat is engaged.

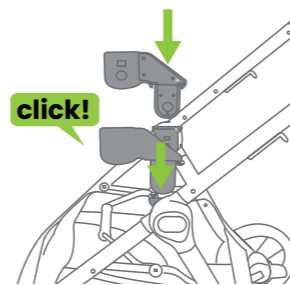
Second Seat Assembly

Attaching & Removing the Seat Extenders

IMPORTANT NOTE:

- The seat extenders **MUST** be used to create more space between the top and second seat when in tandem mode.
- The second seat can be used in many configurations, do not use the configuration if there isn't enough space for the lower child.

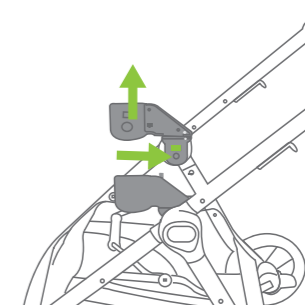
A



Select the seat extender with the coloured dot and align with the dot on the frame socket. Firmly press down until you hear a 'click', a green indicator will display on the frame socket.

Repeat on the other side with the seat extender and frame socket without the dot.

B



To remove, press and hold the round button on the seat extenders and pull out.

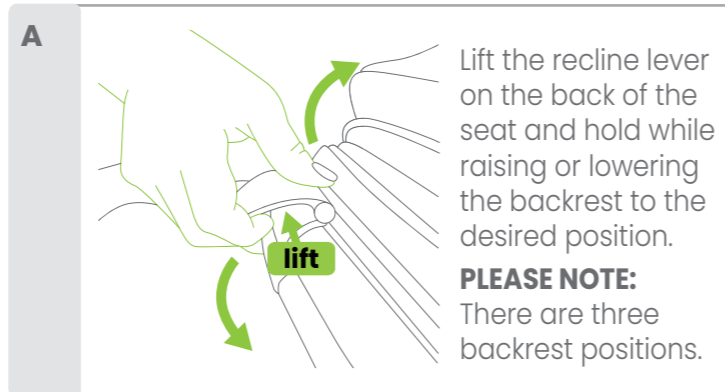
Second Seat Operation

Adjusting the Backrest

WARNINGS

- **THE UPRIGHT POSITIONS ARE NOT SUITABLE FOR USE WITH CHILDREN LESS THAN 6 MONTHS OLD.**
- **THE LOWEST RECLINE POSITION SHOULD BE USED TO TRANSPORT BABIES. THE BACKREST CAN BE ADJUSTED TO A MORE UPRIGHT POSITION AS THE CHILD GROWS OLDER AND IS ABLE TO SUPPORT ITS HEAD WITHOUT ASSISTANCE.**

☺ **TIP:** If the child is sitting in the seat, support the backrest as it reclines. If you have difficulty adjusting the backrest you may need to remove the child from the seat to allow you to raise or lower the backrest with ease.



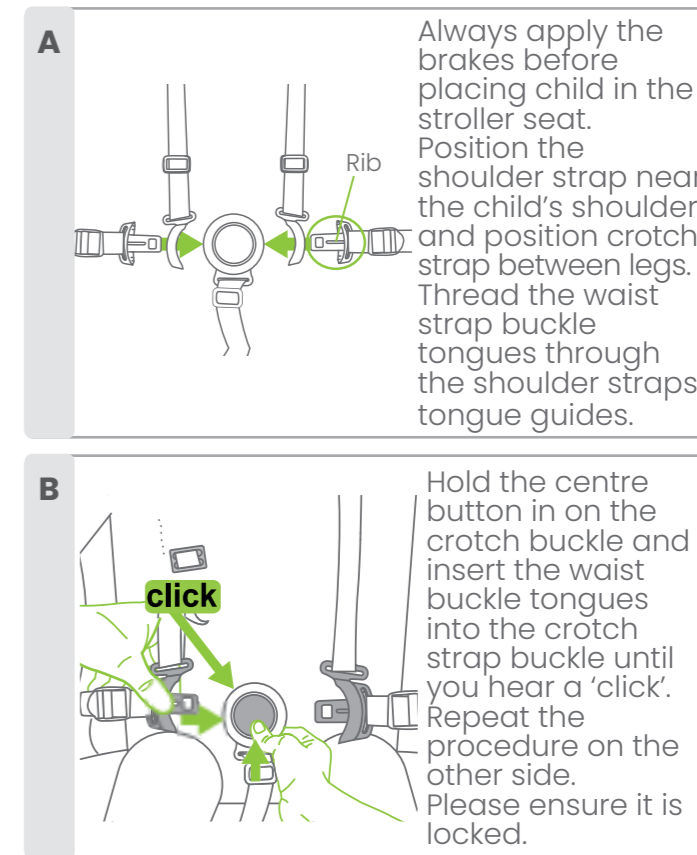
Second Seat Operation

Securing the Harness

WARNINGS:

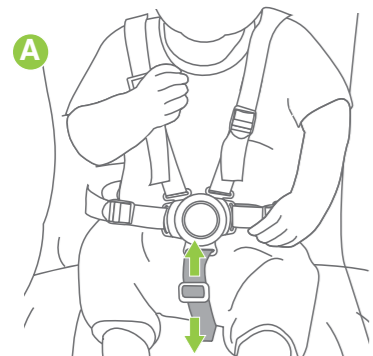
- **USE THE HARNESS AT ALL TIMES.**
- **ENSURE YOUR CHILD IS SECURED WITH A CORRECTLY ADJUSTED HARNESS.**
- **THE ADJUSTED HARNESS SHOULD CLOSELY FIT THE CHILD.**
- **NEVER LEAVE THE HARNESS BUCKLED WHEN NOT FITTED TO A CHILD IN THE STROLLER, BECAUSE THE HARNESS CAN FORM LOOPS WHICH MAY POSE A STRANGULATION HAZARD.**
- **WHEN HARNESS IS NOT IN USE, DISCONNECT SHOULDER STRAPS FROM THE WAIST STRAPS AND BUCKLE TO PREVENT STRANGULATION.**
- **A five-point harness is provided to restrain your child.**
- **Buckle tongues separate for added safety.**
- **To reconnect buckle tongues and to secure the child in the harness please follow the steps to the right carefully.**

PLEASE NOTE: Each waist buckle tongue has a raised rib on one side and can only be locked into the buckle assembly with the raised rib facing up. Ensure the harness straps are not twisted as they may become uncomfortable for the child.

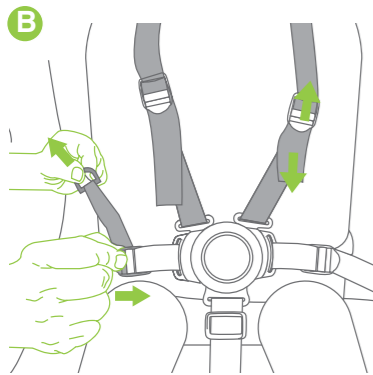


Second Seat Operation

Adjusting the Harness



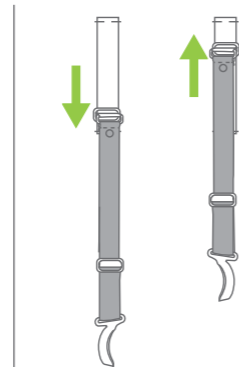
A. Tighten or loosen the crotch strap by sliding the harness adjuster up or down to the desired fit. Note: The crotch strap should be adjusted to a snug fit.



B. Tighten or loosen the waist and shoulder straps by sliding the harness adjuster to the desired fit. Note: The straps need to fit firmly around the child.

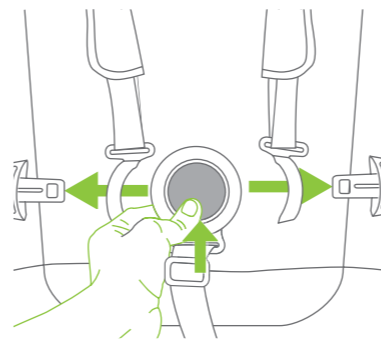
Adjusting the Harness Height

IMPORTANT NOTE: The harness can be adjusted to different heights to accommodate the child. The shoulder straps must be positioned near the child's shoulders.



To change the shoulder harness height, simply hold the shoulder harness and slide up and down to the desired position.

Releasing the Harness



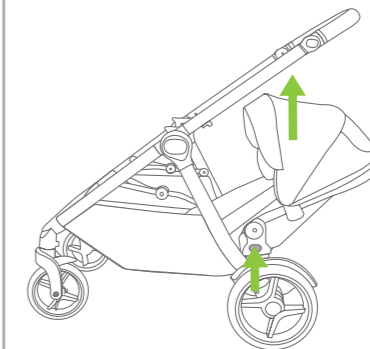
Press the centre of the buckle to release all straps at once.

Second Seat Operation

Removing the Second Seat

IMPORTANT NOTE:

- Always remove your child from the seat before removing the second seat.
- Always remove the second seat before folding.



Lift both release levers on the seat connectors at the same time and lift the seat up and away from the stroller frame.

Care & Maintenance

General Maintenance & Repair

- Ensure all safety devices, locks, harness, and brakes are in working order.
- Ensure all joints and folding areas move freely as intended.
- Should any moving or locking parts become stiff or hard to operate, ensure these are free from tension, or dirt by wiping clean with a damp cloth to remove any dirt, sand, or debris. Allow to dry and lightly spray with a dry silicon lubricant. Please carefully read the lubricant instructions prior to use.
- Ensure wheels are regularly cleaned with a damp cloth by removing dirt, sand, or debris. Allow to dry and lightly spray the wheel pivot pin with a dry silicon lubricant to keep the wheels moving smoothly. Please carefully read the lubricant instructions prior to use.
- Regularly spray all moving parts with a dry silicon lubricant. Please carefully read the lubricant instructions prior to use.
- Ensure all connecting rivets and screws are secure. Tighten if required.
- If there are compression marks on the tyres, use a domestic hair dryer to gently warm (DO NOT OVERHEAT) the tyre and the compression marks should slowly disappear.
- To maintain the safety and longevity of the stroller, seek prompt repairs or replacement

for bent, torn, worn, or broken parts. Do not continue to use the stroller if unsafe.

- All repairs should only be carried out by an authorised Britax repairer. Only Britax replacement parts should be used with the stroller. It may be unsafe to use parts supplied from another manufacturer.

General Tips

Do not store the stroller in your car for prolonged periods of time during summer as it may lead to damage to some of the plastics components.

Do not leave the stroller in direct sunlight for extended periods of time, as colours of some fabrics may fade, and tyres may deteriorate.

Do not fold or store the stroller if damp or wet, as fabric may develop mould or mildew. Always store the stroller inside in a dry, well-ventilated area.

Do not place heavy objects on top of the stroller as it may alter the shape.

Should you have any further questions on care & maintenance of the stroller, please contact our Consumer Service Team at: aunz-support@britax.com

Care & Maintenance

Cleaning

Fabrics

- Removable fabrics may be cleaned using lukewarm water and soap or mild detergent. Rinse thoroughly and allow to dry away from direct sunlight.
- Non-removable fabrics can be spot cleaned using a damp sponge and soap or mild detergent. Allow to dry completely before re-use or storage.
- Never use bleach, or abrasive cleaning products.
- **DO NOT** iron or dry clean.

NOTE: DO NOT place any of the stroller fabrics in the dryer. Allow to dry naturally, away from direct sunlight.

Frame

- Remove dirt and dust away from any moving mechanism.
- Clean frame with a soft damp cloth and soap or mild detergent and allow to dry thoroughly.
- **DO NOT** use abrasive cleaning products as it may cause stains, discolouration or scratches to the frame.
- **DO NOT** soak or submerge frame in water.
- **DO NOT** remove, dismantle or alter any part

of the stroller mechanism or brakes.

Leatherette

- Spot clean with a damp soft cloth.
- **DO NOT** use a dripping wet cloth or wet the leatherette excessively.

Wheels

- Remove wheels from stroller.
- Clean with damp cloth and soap or mild detergent. Use brush to remove dirt and mud build up around the tyre. Allow to dry thoroughly before placing wheels back on the frame.
- If necessary lubricate wheel shaft with a small amount of lubricant before placing into the stroller.
- Ensure the stroller is cleaned thoroughly after using it on the beach as sand and salt can damage stroller mechanism, wheel assembly, causing premature wear and corrosion.

PLEASE NOTE:

Our product warranty does not cover any rust to the rivets or screws, if you are caught in the rain or at the beach always thoroughly dry the frame to avoid any rust damage.

Just like servicing your car or bicycle, prams and strollers also need **regular maintenance checks**. These checks can improve product performance, extend the life of your stroller and help to provide you and your children a safe and smooth journey.



We recommend servicing your stroller every 6 months and completing an inspection once a month. To prolong the life of your stroller, a regular maintenance should be performed.

5 STEP CHECK LIST

1. **INSPECT SAFETY DEVICES** tether strap, frame lock, harness, buckle and brakes, and ensure all are in working order and free from dirt, sand, and debris.
2. **INSPECT** all connecting rivets and screws are secure.
3. **MAKE SURE FOLDING JOINTS** are free of dirt, dust, and debris by cleaning with a damp cloth, allow to dry and lightly spray with a dry silicon lubricant. Please carefully read the lubricant instructions prior to use.
4. **REMOVE WHEELS** and wipe clean with a damp cloth to remove any dirt, sand or debris. Allow to dry and lightly spray the wheel pivot pin with a dry silicon lubricant to keep the wheels moving smoothly. Please carefully read the lubricant instructions prior to use.
5. **ENSURE WHEN FOLDING AND STORING** to wipe down your stroller frame and allow to dry before storing in a dry place without direct sunlight.

Australian Consumer Law

On all of our goods, you have the benefit of a statutory consumer guarantee. In summary, goods are guaranteed to be of “acceptable quality” (fit for purpose), goods are guaranteed to match any sample against which they are sold. These consumer guarantees are provided for by the Australian Consumer Law and, if you believe any one of these guarantees is not satisfied by a Britax product, you have rights under the Australian Consumer law to enforce that guarantee.

Your rights under the statutory consumer guarantees are set out in the **Australian Competition and Consumer Commission’s Consumer Guarantees – A Guide for Consumers**.

In addition to the statutory consumer guarantees, **Britax** offers its own company warranty on all of its products. You therefore have the option of seeking redress for defective or faulty product either under the **Britax** company warranty or the statutory guarantees.

After the **Britax** company warranty expires, you still have your rights under the statutory consumer guarantees.

International Warranty

Britax products are available through a network of retailers in Australia and New Zealand. If you are an international customer we do not offer a warranty service outside of these regions.

THIS PRODUCT IS NOT INTENDED FOR COMMERCIAL USE

Warranty

Did you know?

Registering your product online simplifies proof of purchase in the event of a warranty claim.

Head to our website to fill out the product registration form:

britax.com.au **britax.co.nz**



Making A Warranty Claim

Your rights under a **Britax** company warranty are separate from and independent of your rights under the statutory consumer guarantees. What you need to do to enforce your rights under a statutory consumer guarantee is set out in the

Australian Competition and Consumer Commission's Consumer Guarantees – A Guide for Consumers.

To make a claim under a **Britax** company warranty, please contact our customer service team on:

Australia: 1300 303 330 / **New Zealand:** 0508 688 822 *or* alternatively by email at: **aunz-support@britax.com**

You will be required to :

- Return the product to the place of purchase or to a designated repair agent;
- Present your receipt as proof of purchase;
- Identify the defect in the product; and
- Present the product to **Britax** for inspection on request.

Britax will advise you whether the product is covered by the **Britax** company warranty. **Britax's** decision of whether a product is covered by a **Britax** company warranty is final.

Britax will act reasonably when determining whether a product is covered by a company warranty.

Series No. RM-S287T2
Art No. 4002417_A

Britax Childcare Pty. Ltd.

A.B.N. 55 006 773 600

Level 4, 650 Lorimer Street, Port Melbourne, Victoria 3207, Australia

Phone: (03) 9288 7288 **Fax:** (03) 9311 5798

Customer Service

Australia: 1300 303 330 / **New Zealand:** 0508 688 822

Due to our continuing program of development, Britax reserves the right to alter the specifications, color or design without any further notice.

The **Britax** trademark is the property of Britax Childcare Holdings Limited - UK.

Visit the **Britax** website at: **britax.com.au** or **britax.co.nz** or email us at **aunz-support@britax.com**

Due to the variations in the style and design of our products the illustrations used in this instruction booklet are generic.

This product is designed to comply with **Australian Standard AS 2088:2022**

“Prams and Strollers- Safety Requirements”

Copyright © 2021 Britax Childcare Pty. Ltd. Australia