

Travel Stroller



0<sub>KG</sub>  

---

22<sub>KG</sub>

**IMPORTANT** KEEP THIS  
BOOKLET IN A SAFE PLACE  
FOR FUTURE REFERENCE

## Contents

About Your Stroller	Stroller Warnings & Important Notes	03	Stroller Operation	Adjusting the Harness	15
	Lift & Carry Correctly	05		Adjusting the Harness Height	15
	What's in the Box: Stroller Parts	06		Releasing the Harness	15
	Stroller Features	07		Using the Shoulder pads	16
				Using the Tether Strap	17
Stroller Assembly	Opening the Frame	09	Folding the Stroller	18	
	Attaching & Removing the Rear Wheels	10	Lifting & Carrying the Stroller	19	
	Attaching & Removing the Front Wheels	10			
	Attaching the Canopy	11			
	Attaching the Arm Bar	11			
Stroller Operation	Operating the Brakes	12			
	Adjusting the Leg Rest	12			
	Adjusting the Backrest	13			
	Securing the Harness	14			
Stroller Accessories			Baby Capsule	Baby Capsule Warnings & Important Notes	20
				Installing & Removing the Britax Click & Go™ Baby Capsule Adaptors	21
				Installing the Britax Baby Capsule	22
				Attaching the Rain Cover	23
				Attaching the Sun Cover	24
				Installing the Seat Liner	25
Care & Maintenance			Attaching the Cup/Bottle Holder	25	
			Care & Maintenance	26	
			Warranty	29	
		Notes	31		

**Always** follow the manufacturer's instructions. Read all instructions carefully before assembly and use of this stroller.

**The correct use and maintenance of this product is essential.**

## WARNINGS

- FOLLOW THE MANUFACTURER'S INSTRUCTIONS.
  - PUT ON ALL THE BRAKES WHENEVER YOU PARK THE STROLLER.
  - DO NOT LEAVE CHILDREN UNATTENDED.
  - DO NOT CARRY EXTRA CHILDREN OR BAGS ON THIS STROLLER.
  - MAKE SURE CHILDREN ARE CLEAR OF ANY MOVING PARTS IF YOU ADJUST THE STROLLER, OTHERWISE THEY MAY BE INJURED.
  - THE VEHICLE IS NOT TO BE USED AS AN UNSUPERVISED SLEEPING ENVIRONMENT.
  - DO NOT USE ANY ACCESSORIES OTHER THAN THOSE APPROVED FOR USE WITH THIS STROLLER BY BRITAX.
  - IT IS UNSAFE TO USE ACCESSORIES NOT APPROVED FOR USE WITH THIS STROLLER.
  - THE MAXIMUM WEIGHT OF THE CHILD USING THIS STROLLER IS NOT TO EXCEED 22KG.
- FOR IMPORTANT NOTES AND WARNINGS ON ACCESSORIES** – REFER TO THEIR INDIVIDUAL SECTIONS IN THIS BOOK OR THE INSTRUCTION MANUAL INCLUDED WITH THE INDIVIDUAL PRODUCTS. THE MAXIMUM WEIGHT VARIES FOR EACH ACCESSORY.

## IMPORTANT NOTES:

- Use great care when using the stroller on stairs, escalators, travelators or other moving surfaces.
- It is recommended to remove the child from the stroller before going up or down stairs or escalators.
- Do not allow children to stand on the seat.
- Do not hang bags unless they are supplied or goods from the handle as this could cause the stroller to tip over.
- Do not leave the stroller and its accessories near an open fire or exposed flame.
- Do not place more than 6kg in the basket.



This **CAUTION** symbol is shown at certain steps in this instruction manual to highlight the danger of being injured by moving parts.

## Lift & Carry Correctly

**The SMART lifting technique:** This technique can be used to pick up small light loads from low levels.

### Size up the load

- Assess the load (size, shape, and weight).
- Assess whether the load needs to be moved;
- Where is it going to be placed" Check that there are no obstructions;
- Assess whether mechanical or human assistance is required.

### Move the load as close to the body as possible

- A load is heavier to lift or carry if it is not close to the body.
- The whole hand should be used to ensure a firm grip.

### Always bend your knees

- Maintain balance.
- Keep feet apart and in a comfortable position.
- Minimise lower back bending.
- Bend knees preferable at as large an angle as possible but not at a right angle – use a semi-squat in preference to a full squat.

### Raise the load with your legs

- Achieve the lift smoothly and without jerkiness.
- Maintain the normal curvature of the spine to allow the force of the load to be distributed evenly from the spine to the pelvis.

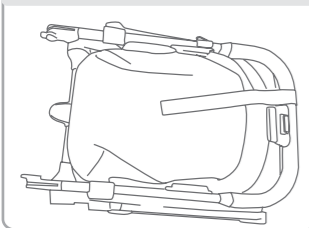
### Turn your feet in the direction that you want to move the load.

- Avoid unnecessary bending, twisting, and reaching.
- Change direction by turning your feet and not your back.
- To set the load down, squat down, keep your head up and let your legs do the work.

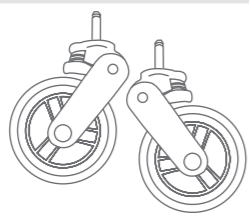
Remember to **THINK TALL** – chest lifted, shoulders relaxed, chin tucked in, and head level.

## What's in the Box: Stroller Parts

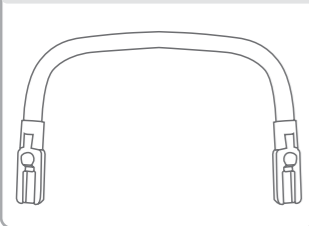
1 x Stroller



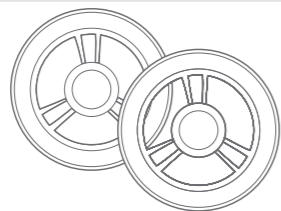
2 x Front Wheels



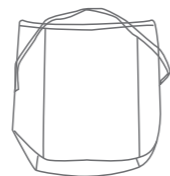
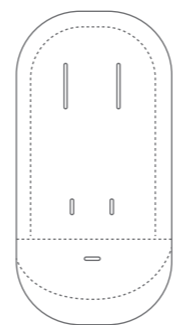
1 x Arm Bar



2 x Rear Wheels



## What's in the Box: Accessories

1 x Travel Bag  
(if supplied)1 x Seat liner  
(if supplied)1 x Cup/bottle Holder  
(if supplied)

## Optional Accessories (Sold Separately)

- Britax Rain cover
- Britax Sun cover
- Britax Click & Go™ baby capsule adaptors travel

- Britax baby capsules and selected competitor baby capsules, for detailed compatibility refer to:

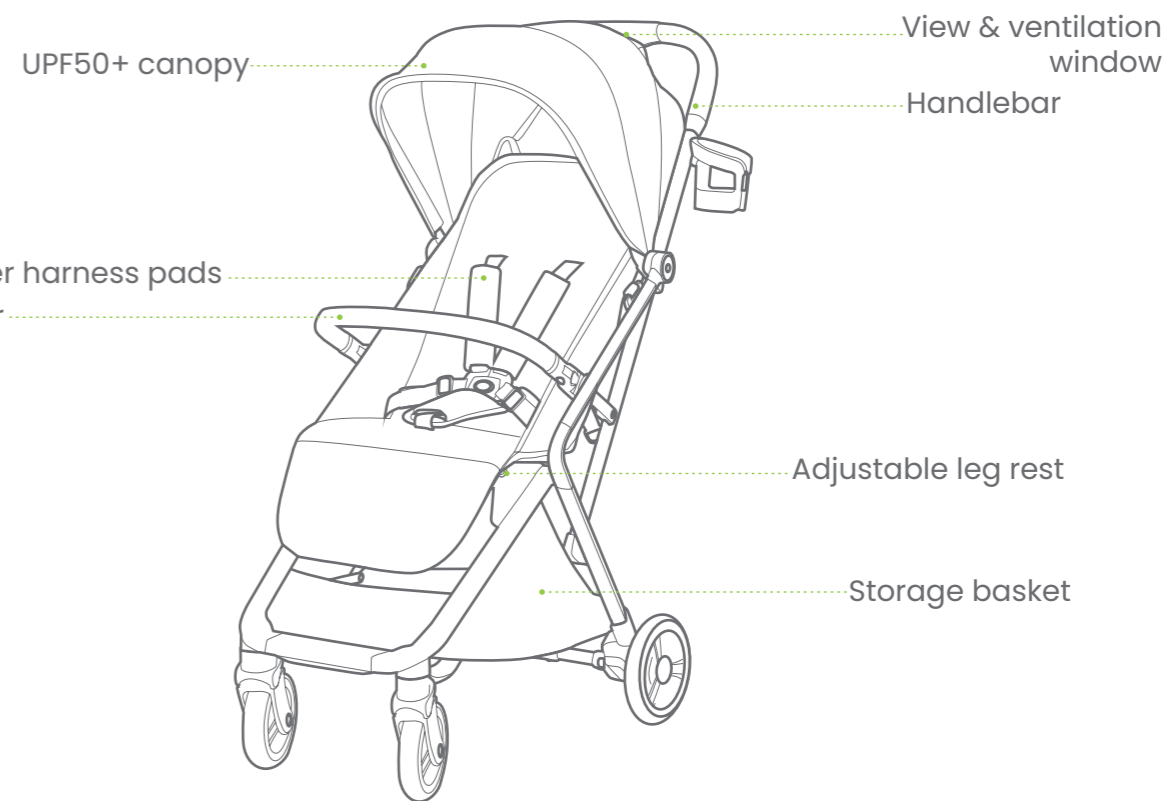
Australia:  
[britax.com.au](http://britax.com.au)

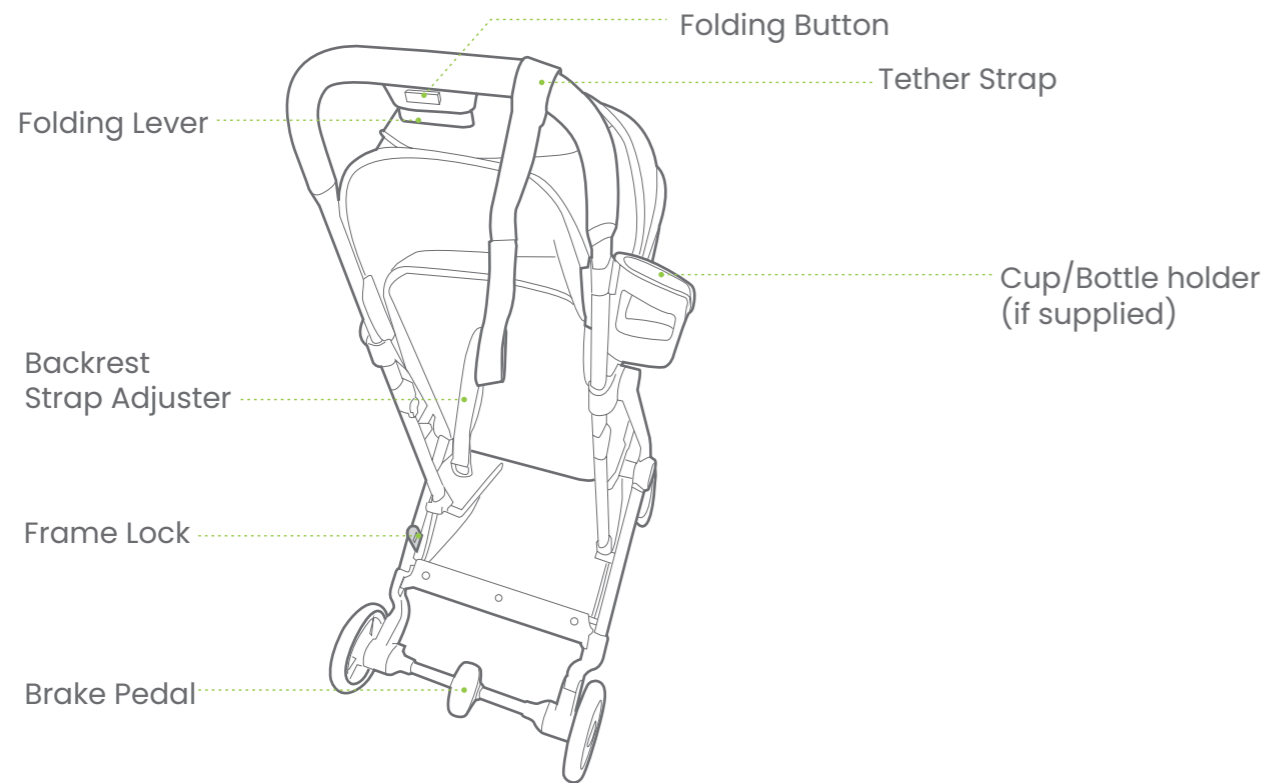


New Zealand:  
[britax.co.nz](http://britax.co.nz)



## Stroller Features



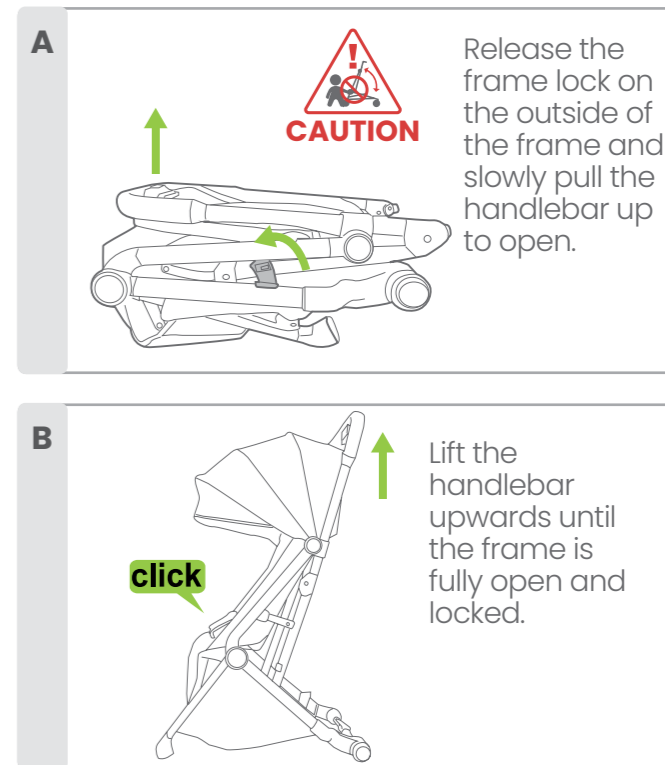


## Opening the Frame

**IMPORTANT NOTES:**

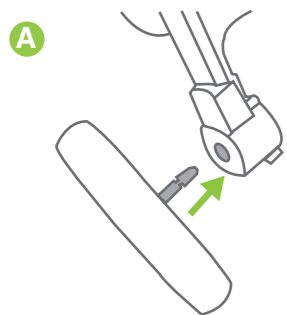
PLEASE REFER TO PAGE 5 FOR SMART LIFTING TECHNIQUES.

- Release the frame lock with due care and open the frame.
- When opening the stroller, be aware of the danger of being injured by moving parts and locking devices during the process. Keep all hands and limbs clear of these parts.
- There is potential for fingers or parts of the body to be injured when the stroller is being unfolded, due care should be exercised.
- Keep children clear of the stroller when unfolding the stroller.
- Open the stroller slowly and be careful where you place your hands. Keeping your hands on the handle is the best way to unfold the stroller.

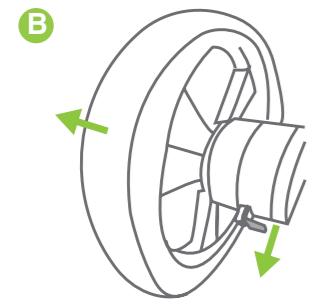


## Stroller Assembly

### Attaching & Removing the Rear Wheels



**A.** To attach the rear wheels, insert each wheel axle into rear wheel housing and push in until locks. Pull on the wheel to ensure it is locked.

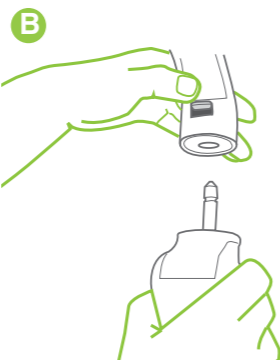


**B.** To remove the rear wheels, pull the metal latch downwards on the underneath of the rear wheel housing and then pull the wheel out.

### Attaching & Removing the Front Wheels



**A.** To attach the front wheels, insert each wheel into wheel housing and push in until locks. Pull on the wheel to ensure it is locked.



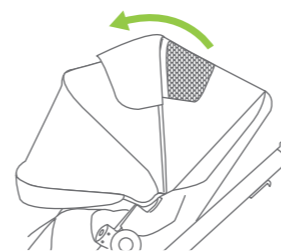
**B.** To remove the front wheels, press the quick release button behind the leg moulding.

## Stroller Assembly

### Using the Canopy

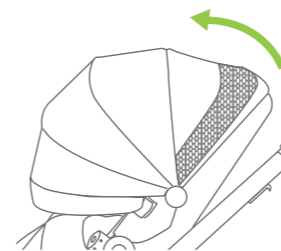
**IMPORTANT NOTE:** The sun is very strong. **DO NOT LEAVE YOUR CHILD EXPOSED TO THE SUN.** The canopy or hood on this product will not give your child total protection from the harmful rays of the sun.

There are two different canopy styles available.



Canopy 1.

To expose the view and ventilation window, flip open the window flap.

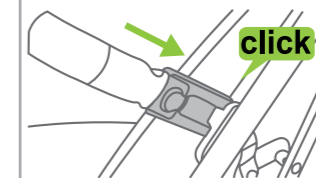


Canopy 2.

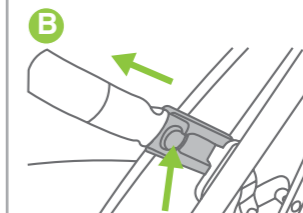
To open the view and ventilation window, unzip open the last canopy panel.

### Attaching the Arm Bar

**WHEN A CHILD IS IN THE STROLLER, KEEP THE ARM BAR ATTACHED AT ALL TIMES.**



**A.** Align the arm bar mouldings with the arm bar sockets on the stroller, and slide the arm bar in until it locks into place.



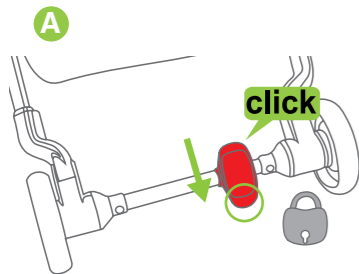
**B.** To remove, press and hold the release buttons and pull the arm bar out. For easy in and out access release one side only.

## Stroller Operation

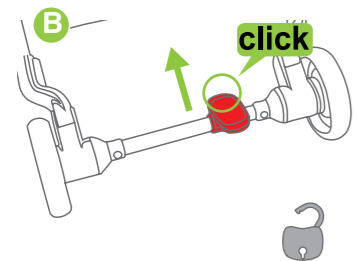
### Operating the Brake

#### **! WARNINGS:**

**ALWAYS APPLY THE BRAKES WHEN THE STROLLER IS STATIONARY.**



**A.** To engage the brake, step on the front of the red brake pedal until you hear a 'click'.

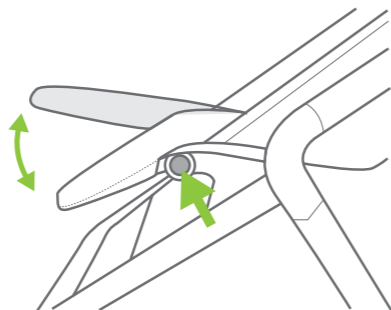


**B.** To disengage the brake, step on the back of the red brake pedal until you hear a 'click'.

### Adjusting the Leg Rest

#### **IMPORTANT NOTES:**

- The leg rest feature is provided for your child's comfort.
- The leg rest is not designed to support extra weight.
- Do not allow children to stand or sit on the leg rest, it will disengage if extra weight is applied.
- If leg rest disengages simply lift up again to reset leg rest mode.



Press the buttons on both sides of the leg rest and adjust to the desired position.

### Adjusting the Backrest

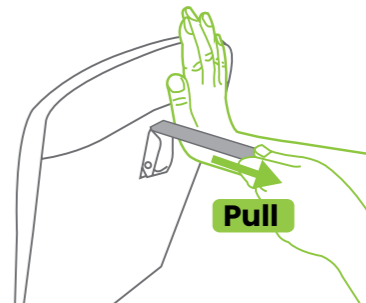
#### **! WARNINGS:**

- THE UPRIGHT POSITIONS ARE NOT SUITABLE FOR USE WITH CHILDREN LESS THAN 6 MONTHS OLD.
- THE LOWEST RECLINE POSITION SHOULD BE USED TO TRANSPORT BABIES. THE BACKREST CAN BE ADJUSTED TO A MORE UPRIGHT POSITION AS THE CHILD GROWS OLDER AND IS ABLE TO SUPPORT ITS HEAD WITHOUT ASSISTANCE.

**TIP:** If the child is sitting in the seat, support the backrest as it reclines. If you have difficulty adjusting the backrest you may need to remove the child from the seat to allow you to raise or lower the backrest with ease.

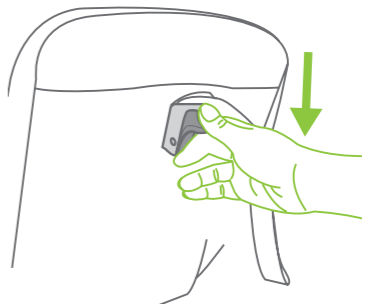
## Stroller Operation

**A**



To raise the backrest, support the backrest with one hand and pull the strap until desired position.

**B**



To lower the backrest, push the button down then slowly lower the backrest.

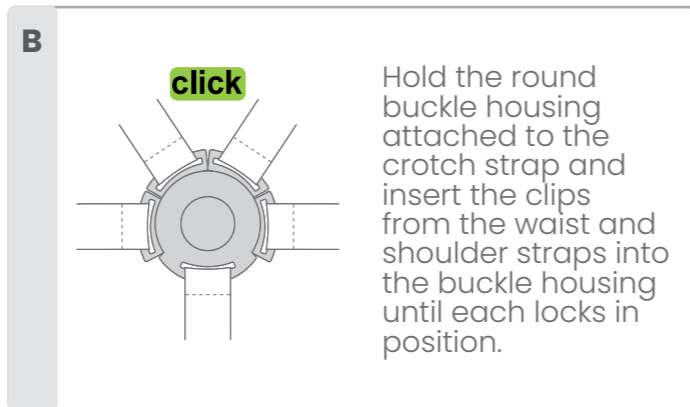
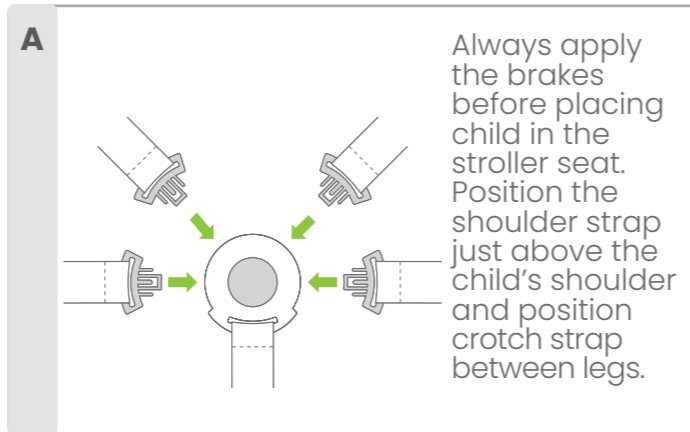
## Stroller Operation

### Securing the Harness

#### **WARNINGS:**

- **USE THE HARNESS AT ALL TIMES.**
- **ENSURE YOUR CHILD IS SECURED WITH A CORRECTLY ADJUSTED HARNESS.**
- **THE ADJUSTED HARNESS SHOULD CLOSELY FIT THE CHILD.**
- **NEVER LEAVE THE HARNESS BUCKLED WHEN NOT FITTED TO A CHILD IN THE STROLLER, BECAUSE THE HARNESS CAN FORM LOOPS WHICH MAY POSE A STRANGULATION HAZARD.**
- **WHEN HARNESS IS NOT IN USE, DISCONNECT SHOULDER STRAPS FROM THE WAIST STRAPS AND BUCKLE TO PREVENT STRANGULATION.**
- **A five-point harness is provided to restrain your child.**
- **Buckle tongues separate for added safety.**
- **To reconnect buckle tongues and to secure the child in the harness please follow the steps to the right carefully.**

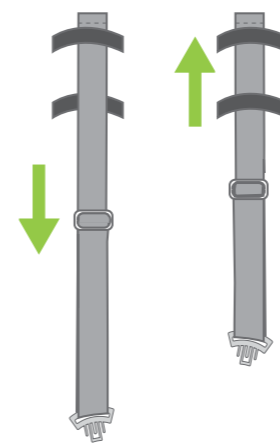
**PLEASE NOTE:** Each waist buckle tongue has a raised rib on one side and can only be locked into the buckle assembly with the raised rib facing up. Ensure the harness straps are not twisted as they may become uncomfortable for the child.



## Stroller Operation

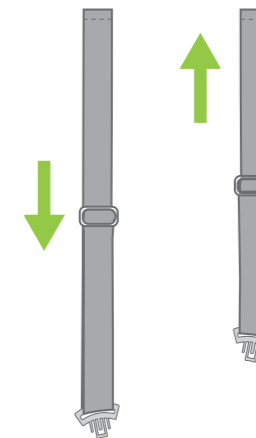
### Adjusting the Harness Height

There are two different harnesses available. Check below to find out how to adjust the harness to the right height for your child.



#### Strap Guide Harness (If fitted)

Adjust the shoulder straps to the desired height by sliding the straps in or out of any of the three strap heights, depending on the child's shoulder height.



#### Slide Harness (If fitted)

To change the shoulder harness height, simply hold the shoulder harness and slide up and down to the desired position.

**IMPORTANT NOTE:** The harness can be adjusted to different heights to accommodate the child. The shoulder straps must be positioned just above the child's shoulders.

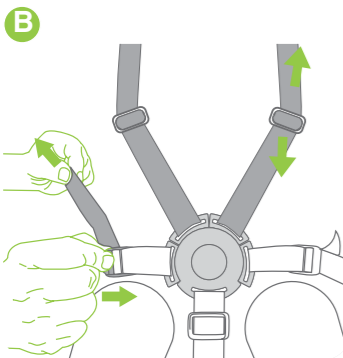


## Stroller Operation

### Adjusting the Harness

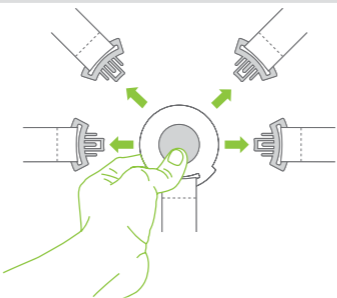


**A.** Tighten or loosen the crotch strap by sliding the harness adjuster up or down to the desired fit. Note: The crotch strap should be adjusted to a snug fit.



**B.** Tighten or loosen the waist and shoulder straps by sliding the harness adjuster to the desired fit. Note: The straps need to fit firmly around the child.

### Releasing the Harness

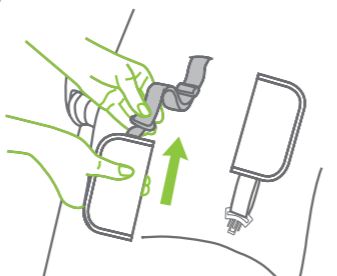


Press the centre of the buckle to release all straps at once.

### Using The Shoulder Pads

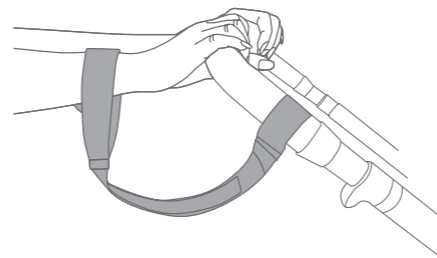
#### **IMPORTANT NOTE:**

Ensure the pads are always on harness to provide extra comfort and protection to your child's shoulders.



Slide the shoulder harness pads onto the shoulder harness straps and adjust to the position which fits comfortably on the child.

### Using the Tether Strap



A wrist tether strap is provided on the handle grip. Slide your hand through the tether strap loop whenever you use the stroller. Only remove your hand from the tether strap loop when the brakes have been applied to the stroller wheels.

## Stroller Operation

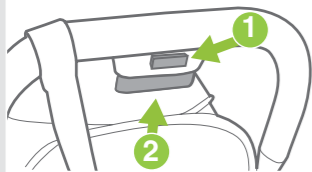
**! WARNINGS:** USE THE TETHER STRAP TO STOP THE STROLLER ROLLING AWAY.

- **THE STROLLER IS DESIGNED FOR USE ON FLAT OR GENTLY SLOPING SURFACES, AND MAY BE UNSTABLE ON HIGHER SLOPING AND UNEVEN SURFACES AND USERS SHOULD BE AWARE OF THE POSSIBILITY OF THE STROLLER ROLLING AWAY OR TIPPING OVER.**
- **NEVER LET GO OF THE STROLLER WHEN PARKED ON AN INCLINE OR SLOPING SURFACE BECAUSE IT MAY SLIDE OR TIP OVER. ALWAYS PARK ON A FLAT SURFACE AND APPLY THE BRAKES.**
- **ALWAYS APPLY THE BRAKES WHENEVER THE STROLLER IS STATIONARY.**

## Stroller Operation

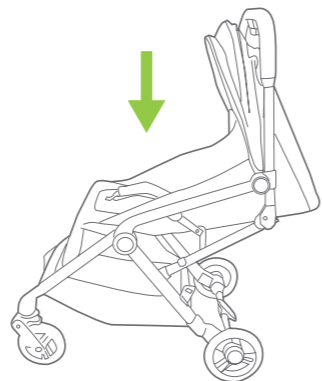
### Folding the Stroller

A



First engage the brake, empty the basket and fold the canopy back. Push the small button at the back of the handle and squeeze the folding lever underneath the handle.

B



Simultaneously push the handlebar forward and fold the top of the stroller down.

C



The stroller will continue folding on its own and self stand. Ensure the frame lock on the side is engaged.

**NOTE:** This stroller is airline friendly with International overhead lockers only. Please check with your airline before travel.

Remove any accessories (arm bar and cup holder) from stroller for a more compact fold and place stroller in the carry bag for easy storage.

## Stroller Operation

### Lifting & Carrying the Stroller

#### **IMPORTANT NOTE:**

PLEASE REFER TO PAGE 5 FOR SMART LIFTING TECHNIQUES.

- **To avoid injury: bend your knees when opening, lifting, carrying, folding, unfolding or adjusting the stroller or any accessories.**
- **To avoid damage, do not place heavy objects on top of the folded stroller.**
- **Ensure that the lock latch is engaged when lifting or carrying the vehicle.**

## Stroller Accessories (Sold Separately)

### Baby Capsule

#### **WARNINGS:**

- IT IS UNSAFE TO USE ACCESSORIES NOT APPROVED FOR USE WITH THIS STROLLER
- DO NOT USE ANY ACCESSORIES OTHER THAN THOSE APPROVED FOR USE WITH THIS STROLLER BY BRITAX.
- DO NOT EXCEED THE MAXIMUM WEIGHT CAPACITY ON THE BABY CAPSULE\*.

#### **IMPORTANT NOTES:**

- The Travel stroller is only compatible with the Britax and selected competitor baby capsules. Baby capsule adaptors included.
- Only use baby capsules that are compatible to fit to this stroller. For detailed compatibility refer to:

Australia:  
britax.com.au



New Zealand:  
britax.co.nz



- The baby capsule must be correctly fitted and locked onto the frame.
- The baby capsule is only to be used in parent facing mode.
- Secure the child using the baby capsule harness at all times.
- Do not leave the child in the baby capsule for extended periods.
- The baby capsule is designed to provide mobility outside of the car, it should not be used instead of an appropriate cot.
- The baby capsule must be removed from the stroller frame before folding.
- The sun is very strong. Do not leave your child exposed to the sun. The canopy or hood on this product will not give your child total protection from the harmful rays of the sun.

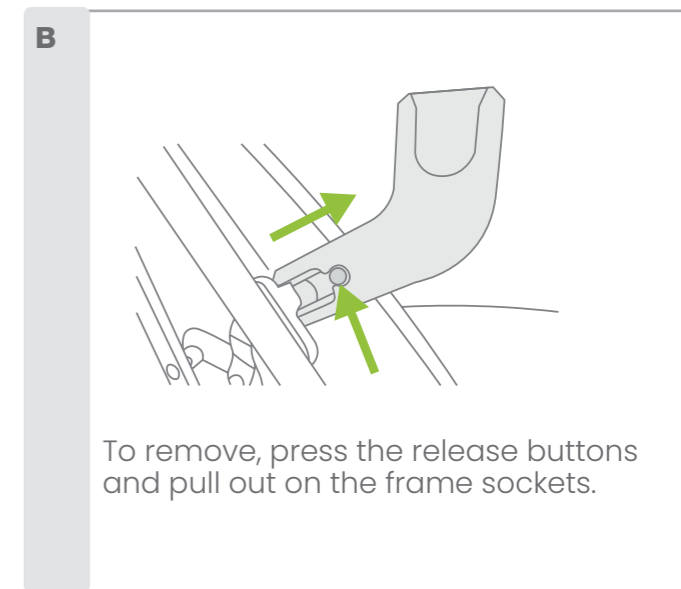
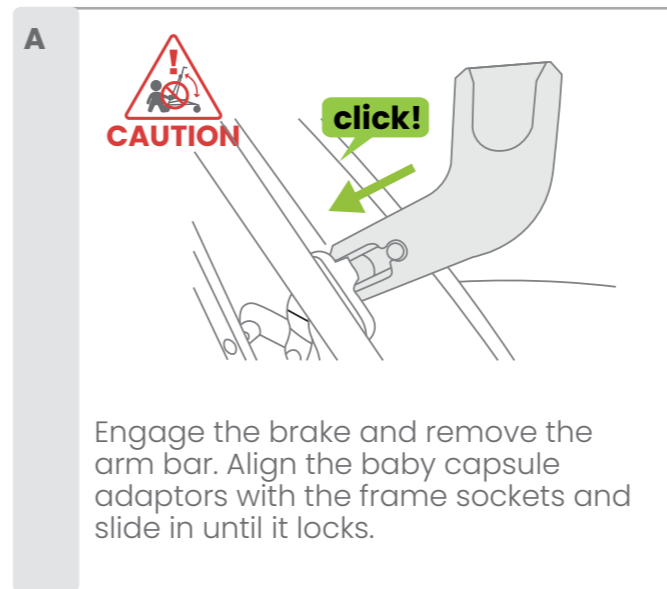
## Stroller Accessories (Sold Separately)

### Baby Capsule Adaptors

Installing & Removing the Britax Click & Go™ Baby Capsule Adaptors Travel.

#### **WARNINGS:**

THE BABY CAPSULE ADAPTORS MUST BE ATTACHED TO THE STROLLER FRAME BEFORE INSTALLING THE BABY CAPSULE.

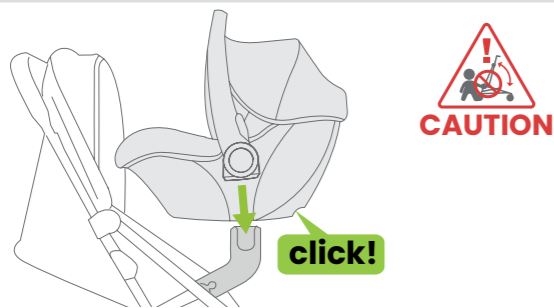


## Stroller Accessories (Sold Separately)

### PLEASE NOTE:

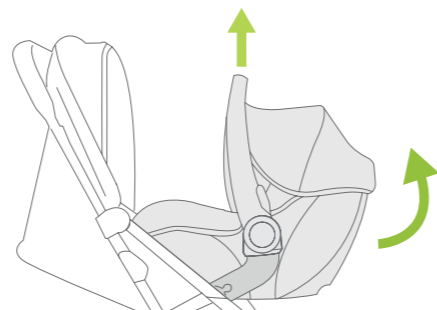
- For attaching or removing competitor baby capsules refer to instruction manual provided with the baby capsule. Baby capsule must be on parent facing mode (facing stroller handlebar).
- These instructions are for installing and removing the baby capsule on the stroller only.
- Ensure the baby is secured in the baby capsule with the harness at all times. Refer to the baby capsule instruction manual regarding placing and securing your baby in the baby capsule.
- For installing and proper use of the baby capsule in the car, please follow the instructions manual provided with the baby capsule.

### Attaching the Britax Baby Capsule



Engage the stroller brake. Align the baby capsule with the adaptors and press down firmly until you hear a 'click'. Pull up the baby capsule to ensure it is locked into the stroller frame.

### Removing the Britax Baby Capsule



Engage the brake. Pull and hold the release lever on the back of the baby capsule and lift to remove from stroller.

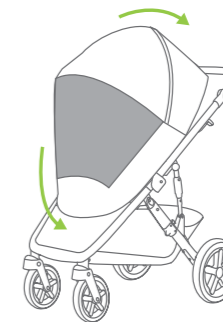
## Stroller Accessories (Sold Separately)

### Rain Cover

### IMPORTANT NOTES:

- Ensure rain cover is kept away from the child's face.
- Refit rain cover if required to ensure child is safe.

### Attaching the Extension



Pull the front elastic section of rain cover over the leg rest. Ensure the rain cover fits snugly over the canopy and is securely fitted to stroller seat.

### Using the Extension



Attach the rain cover extension as required and secure to the rain cover with the zipper (1) and hook & loop (2) attachments.

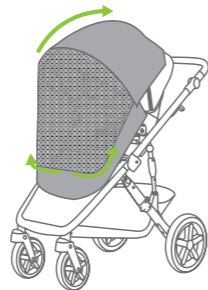
### Accessing your child



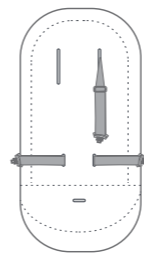
Open front zipper to access the baby.

**Attaching the Sun Cover**

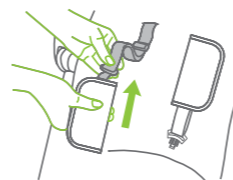
**A.** Fit the sun cover over the canopy front and secure the toggle and elastic loop around the canopy frame then pull to the front and secure with the elasticised end.



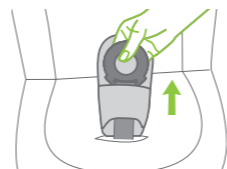
**B.** Lift the sun cover flap to use mesh panel for ventilation and open zipper to access the baby.

**Installing the Seat Liner (if supplied)**

**A.** Place the liner on the stroller seat and thread the shoulder and waist harness straps through the liner harness slots.



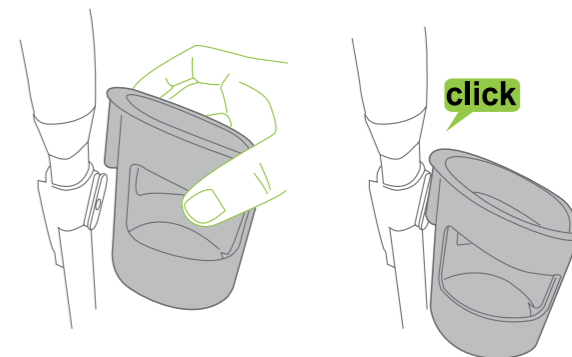
**B.** Ensure the shoulder pads are always on the harness strap by sliding on harness strap and adjust to the position which fits comfortably on the child.



**C.** Ensure the crotch buckle and crotch pad are threaded through the seat liner, adjust for a comfortable fit.

**IMPORTANT NOTES:**

Ensure that the shoulder and waist harness straps are fitted through the liner harness slots and are adjusted to a snug fit

**Attaching the Cup/Bottle holder (If supplied)**

The cup / bottle holder can only fit on the right-hand side of the frame. Slide the cup / bottle holder down to the connector attachment on frame.

**IMPORTANT NOTES:**

- Do not place over 0.5kg in the cup / bottle holder.
- Do not place hot drinks in the cup / bottle holder.
- Remove contents from the cup / bottle holder before folding the stroller.

## Care & Maintenance

### General Maintenance & Repair

- Ensure all safety devices, locks, harness, and brakes are in working order.
- Ensure all joints and folding areas move freely as intended.
- Should any moving or locking parts become stiff or hard to operate, ensure these are free from tension, or dirt by wiping clean with a damp cloth to remove any dirt, sand, or debris. Allow to dry and lightly spray with a dry silicon lubricant. Please carefully read the lubricant instructions prior to use.
- Ensure wheels are regularly cleaned with a damp cloth by removing dirt, sand, or debris. Allow to dry and lightly spray the wheel pivot pin with a dry silicon lubricant to keep the wheels moving smoothly. Please carefully read the lubricant instructions prior to use.
- Regularly spray all moving parts with a dry silicon lubricant. Please carefully read the lubricant instructions prior to use.
- Ensure all connecting rivets and screws are secure. Tighten if required.
- If there are compression marks on the tyres, use a domestic hair dryer to gently warm (DO NOT OVERHEAT) the tyre and the compression marks should slowly disappear.
- To maintain the safety and longevity of the

stroller, seek prompt repairs or replacement for bent, torn, worn, or broken parts. Do not continue to use the stroller if unsafe.

- All repairs should only be carried out by an authorised Britax repairer. Only Britax replacement parts should be used with the stroller. It may be unsafe to use parts supplied from another manufacturer.

#### General Tips

**Do not store the stroller in your car** for prolonged periods of time during summer as it may lead to damage to some of the plastics components.

**Do not leave the stroller in direct sunlight** for extended periods of time, as colours of some fabrics may fade, and tyres may deteriorate.

**Do not fold or store the stroller if damp or wet**, as fabric may develop mould or mildew. Always store the stroller inside in a dry, well-ventilated area.

**Do not place heavy objects on top of the stroller** as it may alter the shape.

Should you have any further questions on care & maintenance of the stroller, please contact our Consumer Service Team at: [aunz-support@britax.com](mailto:aunz-support@britax.com)

## Care & Maintenance

### Cleaning

#### Fabrics

- Removable fabrics may be cleaned using lukewarm water and soap or mild detergent. Rinse thoroughly and allow to dry away from direct sunlight.
- Non-removable fabrics can be spot cleaned using a damp sponge and soap or mild detergent. Allow to dry completely before re-use or storage.
- Never use bleach, or abrasive cleaning products.
- **DO NOT** iron or dry clean.

**NOTE: DO NOT** place any of the stroller fabrics in the dryer. Allow to dry naturally, away from direct sunlight.

#### Frame

- Remove dirt and dust away from any moving mechanism.
- Clean frame with a soft damp cloth and soap or mild detergent and allow to dry thoroughly.
- **DO NOT** use abrasive cleaning products as it may cause stains, discolouration or scratches to the frame.
- **DO NOT** soak or submerge frame in water.
- **DO NOT** remove, dismantle or alter any part of the stroller mechanism or brakes.

#### Leatherette

- Spot clean with a damp soft cloth.
- **DO NOT** use a dripping wet cloth or wet the leatherette excessively.

#### Wheels

- Remove wheels from stroller.
- Clean with damp cloth and soap or mild detergent. Use brush to remove dirt and mud build up around the tyre. Allow to dry thoroughly before placing wheels back on the frame.
- If necessary lubricate wheel shaft with a small amount of lubricant before placing into the stroller.
- Ensure the stroller is cleaned thoroughly after using it on the beach as sand and salt can damage stroller mechanism, wheel assembly, causing premature wear and corrosion.

#### PLEASE NOTE:

Our product warranty does not cover any rust to the rivets or screws, if you are caught in the rain or at the beach always thoroughly dry the frame to avoid any rust damage.

## Care & Maintenance

Just like servicing your car or bicycle, prams and strollers also need **regular maintenance checks**. These checks can improve product performance, extend the life of your stroller and help to provide you and your children a safe and smooth journey.



**We recommend servicing your stroller every 6 months** and completing an inspection once a month. To prolong the life of your stroller, a regular maintenance should be performed.

### 5 STEP CHECK LIST

1. **INSPECT SAFETY DEVICES** tether strap, frame lock, harness, buckle and brakes, and ensure all are in working order and free from dirt, sand, and debris.
2. **INSPECT** all connecting rivets and screws are secure.
3. **MAKE SURE FOLDING JOINTS** are free of dirt, dust, and debris by cleaning with a damp cloth, allow to dry and lightly spray with a dry silicon lubricant. Please carefully read the lubricant instructions prior to use.
4. **REMOVE WHEELS** and wipe clean with a damp cloth to remove any dirt, sand or debris. Allow to dry and lightly spray the wheel pivot pin with a dry silicon lubricant to keep the wheels moving smoothly. Please carefully read the lubricant instructions prior to use.
5. **ENSURE WHEN FOLDING AND STORING** to wipe down your stroller frame and allow to dry before storing in a dry place without direct sunlight.

## Warranty Australian Consumer Law

On all of our goods, you have the benefit of a statutory consumer guarantee. In summary, goods are guaranteed to be of “acceptable quality” (fit for purpose), goods are guaranteed to match any sample against which they are sold. These consumer guarantees are provided for by the Australian Consumer Law and, if you believe any one of these guarantees is not satisfied by a Britax product, you have rights under the Australian Consumer law to enforce that guarantee.

Your rights under the statutory consumer guarantees are set out in the **Australian Competition and Consumer Commission’s Consumer Guarantees – A Guide for Consumers**.

In addition to the statutory consumer guarantees, **Britax** offers its own company warranty on all of its products. You therefore have the option of seeking redress for defective or faulty product either under the **Britax** company warranty or the statutory guarantees.

After the **Britax** company warranty expires, you still have your rights under the statutory consumer guarantees.

### International Warranty

Britax products are available through a network of retailers in Australia and New Zealand. If you are an international customer we do not offer a warranty service outside of these regions.

THIS PRODUCT IS NOT INTENDED FOR COMMERCIAL USE

## Warranty

Did you know?

**Registering your product online simplifies proof of purchase in the event of a warranty claim.**

Head to our website to fill out the product registration form:

**britax.com.au** **britax.co.nz**



### Making A Warranty Claim

Your rights under a **Britax** company warranty are separate from and independent of your rights under the statutory consumer guarantees. What you need to do to enforce your rights under a statutory consumer guarantee is set out in the

**Australian Competition and Consumer Commission's Consumer Guarantees – A Guide for Consumers.**

To make a claim under a **Britax** company warranty, please contact our customer service team on:

**Australia:** 1300 303 330 / **New Zealand:** 0508 688 822 or alternatively by email at: **aunz-support@britax.com**

**You will be required to :**

- Return the product to the place of purchase or to a designated repair agent;
- Present your receipt as proof of purchase;
- Identify the defect in the product; and
- Present the product to **Britax** for inspection on request.

**Britax** will advise you whether the product is covered by the **Britax** company warranty. **Britax's** decision of whether a product is covered by a **Britax** company warranty is final. **Britax** will act reasonably when determining whether a product is covered by a company warranty.



**Britax Childcare Pty. Ltd.**

A.B.N. 55 006 773 600

Level 4, 650 Lorimer Street, Port Melbourne, Victoria 3207, Australia

**Phone:** (03) 9288 7288 **Fax:** (03) 9311 5798

**Customer Service**

**Australia:** 1300 303 330 / **New Zealand:** 0508 688 822

Due to our continuing program of development, Britax reserves the right to alter the specifications, color or design without any further notice.

The **Britax** trademark is the property of Britax Childcare Holdings Limited – UK.

Visit the **Britax** website at: **britax.com.au** or **britax.co.nz** or email us at

**aunz-support@britax.com**

Due to the variations in the style and design of our products the illustrations used in this instruction booklet are generic.

This product is designed to comply with **Australian Standard AS 2088:2022**

“Prams and Strollers– Safety Requirements”

Copyright © 2024 Britax Childcare Pty. Ltd. Australia

**P/No. 2203690\_E**