



Harnessed Child Seat

CLICKTIGHT compatible

6_{MTHS}

8_{YRS}

IMPORTANT:

KEEP THIS BOOKLET IN THE PLACE
PROVIDED ON THE CHILD RESTRAINT

QUICK START GUIDE - a shortened version of the manual

- FORWARD FACING 04

MEET YOUR CHILD SEAT 06

IMPORTANT INFORMATION AND WARNINGS 08

SHOULDER HEIGHT MARKERS 10

OUTGROWN YOUR CHILD SEAT 14

CHILD SEAT SUITABILITY GUIDE 15

FORWARD FACING

CHILD SEAT FEATURES - FORWARD FACING 16

SET UP

- RECLINE POSITION 18
- INSTALLING INTO YOUR VEHICLE 19
- CLICKTIGHT™ 21
- TOP TETHER 25
- LIFT HEADREST AND OPEN CLICKTIGHT™ 27
- ADJUST CROTCH HEIGHT 28
- HEADREST AND SHOULDER HARNESS 29
- ENGAGE BUCKLE & CHECK 30
- ADVANCED SIDE IMPACT CUSHION TECHNOLOGY 31
- REMOVE CHILD FROM CHILD SEAT 32
- REMOVE CHILD SEAT FROM VEHICLE 33



Scan QR code
for installation
video.

CARE & MAINTENANCE

CARE AND MAINTENANCE 36

- CLEAN HARNESS BUCKLE 37
- REMOVE COVER 40
- REPLACE COVER 42

ACCESSORIES 44

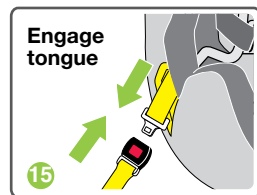
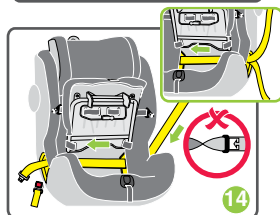
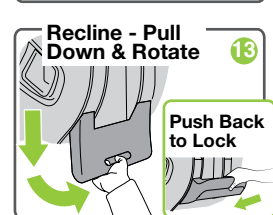
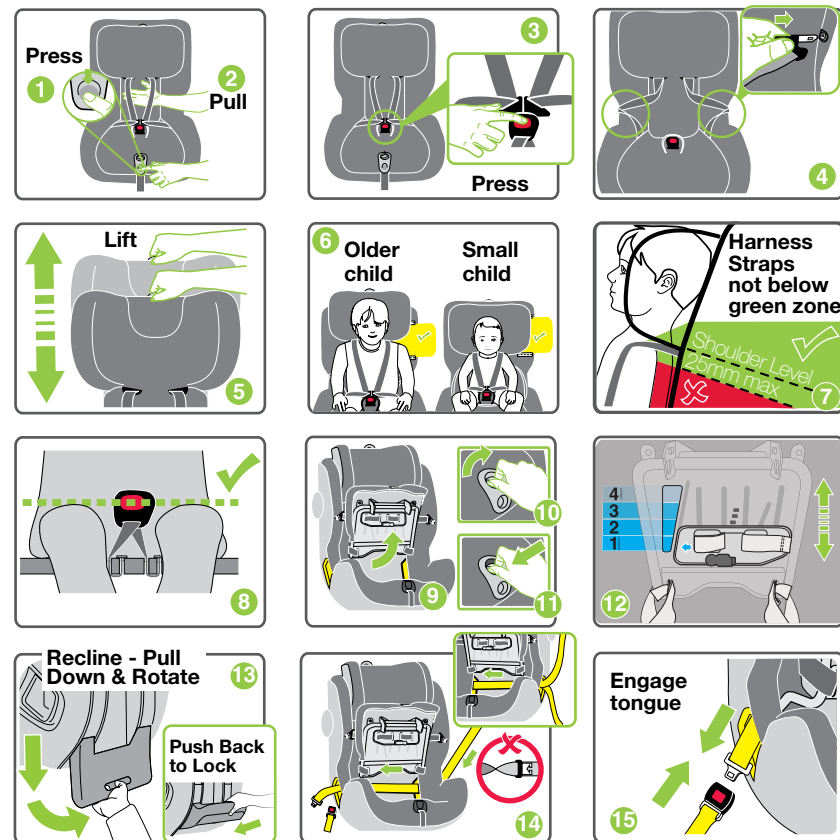
INSTALLATION OF VEHICLE UPPER ANCHOR POINT 47

IN CASE OF ACCIDENT 51

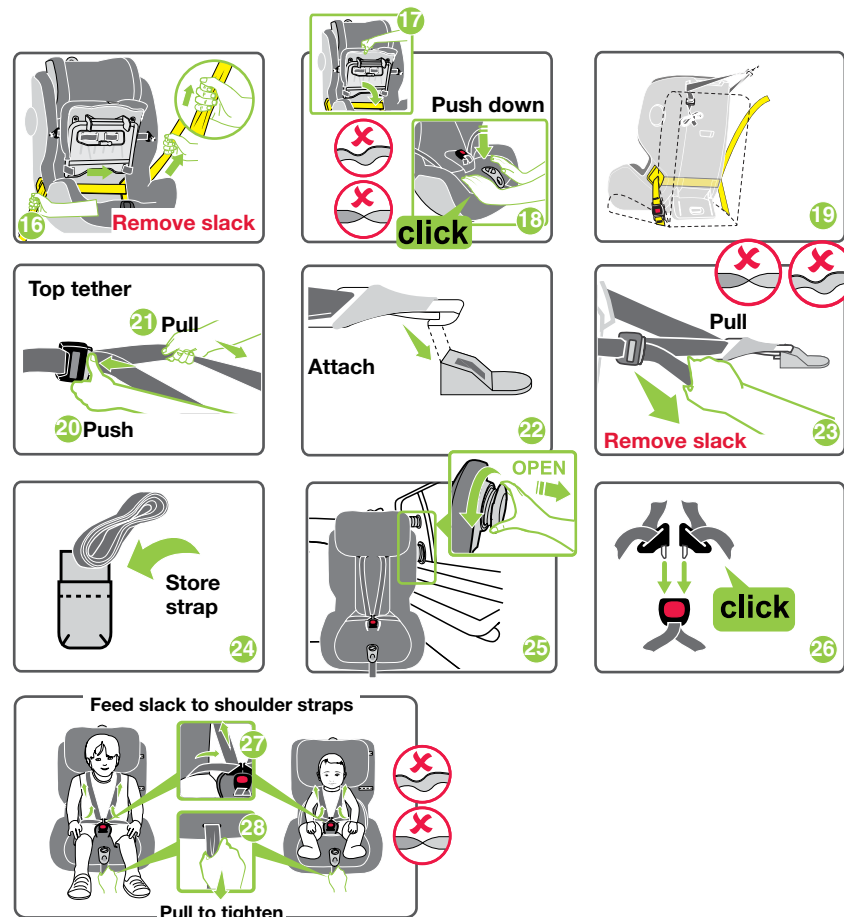
WARRANTY 54

QUICK START GUIDE - FORWARD FACING

Hey, before you install me! Don't forget to note your serial number found under the ClickTight™ to complete your warranty registration.



QUICK START GUIDE - FORWARD FACING



FORWARD FACING

To be used only in a forward-facing position by a child whose shoulders are above the lower shoulder height marker (approximately 6 months of age) until the child's shoulders reach the upper shoulder height marker (approximately 8 years of age).

Continue to use this child restraint until the child reaches this limit.

Do not use this child restraint until child's shoulders are above the lower shoulder height marker.

Infants are at risk of serious injury if they face forward too early.

Children are at risk of serious injury if they move to booster seats too early.

Just using a seatbelt is not recommended for children that have outgrown this restraint. Children are safest in a booster seat until their shoulders reach the upper shoulder height marker of the booster seat.

To ensure that your child gets all the protection designed into the restraint PLEASE READ AND FOLLOW THESE INSTRUCTIONS EXACTLY and use only Britax Safe-n-Sound® recommended parts and accessories.

If in doubt about the method of installation, consult Britax Childcare or agent, or a child restraint fitter. In New Zealand, consult the agent for the vehicle.

肩膀超过靠下肩高标记的婴儿（大约6个月的宝宝）只采用前向式安装，直到儿童肩膀达到靠上的肩高标记（大约8岁的儿童）。

在儿童达到该座椅上限以前必须不断使用这一安全座椅。

在儿童肩膀超过靠下的肩高标记前不得使用该儿童安全座椅。

婴儿若过早乘坐前向式座椅则可能受到严重的伤害。

不建议个子比该座椅大儿童仅仅使用安全带。儿童肩膀达到该垫高椅靠上的肩高标记以前最安全的办法是使用垫高椅。

THE ClickTight™ SYSTEM

The ClickTight™ System makes installing your child seat easier in just a few steps. Your child seat will be safe, secure and remain tightly fixed.

ADVANCED SIDE IMPACT CUSHION TECHNOLOGY (SICT™) PROTECTION

WHY DO I NEED ADVANCED SIDE IMPACT CUSHION TECHNOLOGY (SICT™)?

In the event of an accident, your child must be optimally protected at any age, especially for frontal and side collision. With side collisions, children are at most risk, because side collisions have less crumple zone to disperse the energy released during impact.

WHAT IS IT?

Our Advanced SICT™ – Side Impact Cushion Technology with crumple zone feature is designed to provide optimum safety to your child in the event of a side impact collision.

HOW DOES IT WORK?

With maximum safety and flexibility in mind, Advanced SICT™ can be used when the child seat is positioned next to the vehicle door. When deployed, it is uniquely designed to enhance protection in the event of a side impact collision. Combined with the energy absorbing protective shell, Advanced SICT™ significantly reduces the risk of injury to your child.

ACTIVE HEADREST RESTRAINT (AHR™)

The Active Headrest Restraint is designed with deeper side wings to shield and protect your child's head in a side impact crash. The Active Head Restraint has an inner Side Impact Cushion Technology layer which provides 180 degree protection around your child's head. The AHR™ is adjustable to grow with your child and works in conjunction with SICT™ to protect your child's head and minimise the force of impact.

WARNINGS

- Fit the restraint firmly to the car seat.
- Fit the harness firmly to the child.
- A loose restraint or harness is dangerous.
- Supervision of children is needed because they may be able to undo the buckles and adjusters.
- Use the restraint exactly as shown in the instructions.
- DO NOT LEAVE CHILDREN UNATTENDED IN THE CAR.
- Do not alter or modify this restraint.
- Repairs must only be done by the manufacturers or agent.
- Do not allow the restraint to come into contact with polishes, oils, bleach and other chemicals.
- Destroy the restraint if it has been in a severe crash, even if no damage is visible. See page 51.
- DO NOT USE THIS RESTRAINT WITHOUT THE COVER.
- Always secure the loose end of the top tether strap. Do not use the child restraint where this strap may fall into a split in the seat back or off the side of the seat.
- ALWAYS ATTACH TOP TETHER HOOK AND REMOVE SLACK.
- THIS RESTRAINT IS NOT SUITABLE FOR USE WHERE THE TOP TETHER STRAP MAY FALL INTO A SPLIT IN THE SEAT BACK OR OFF THE SIDE OF THE SEAT.
- DO NOT ATTACH THIS CHILD RESTRAINT TO ANY ISOFIX LOW ANCHORAGE. ISOFIX low anchorages in cars are designed to withstand only those loads imposed by children aged up to approximately 4 years of age in a correctly fitted and approved ISOFIX compatible child restraint. This child restraint is not approved for use with the car's ISOFIX low anchorages.

IMPORTANT:

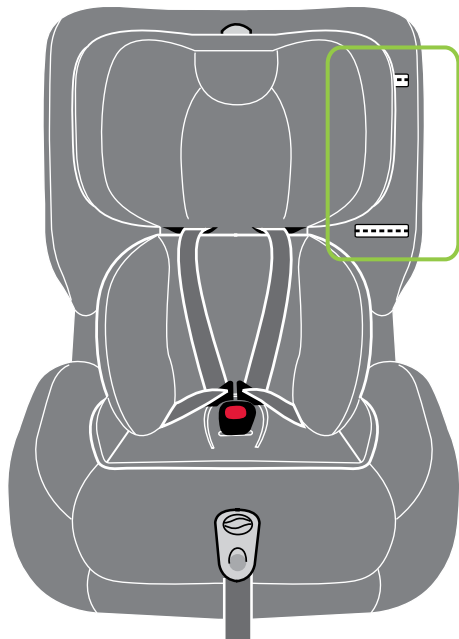
TO BE USED WITH A LAP-SASH OR LAP ONLY SEATBELT IN THE BACK OF MOST CARS WITH FORWARD FACING SEATS.

GENERAL

- Regional Road Rules may prohibit the use of a restraint in the front seat of a vehicle until the child is 4 years of age. Check your Regional Rules for exemptions.
- Regularly check the restraint components, straps and other fittings for correct function and condition. If faulty, cease using and seek repair by Britax.
- Protect all webbing from abrasion and cutting by sharp corners and edges.
- The restraint should not be purchased or sold as a second hand item. It is recommended not to use child restraints older than 10 years as the protection in an accident may be reduced.
- THIS RESTRAINT IS NOT SUITABLE FOR USE WHERE THE TOP TETHER STRAP MAY FALL INTO A SPLIT IN THE SEAT BACK OR OFF THE SIDE OF THE SEAT.
- Seatbelt extenders are not recommended to be used if the seatbelt is not long enough to secure the child restraint. If seatbelts are too short then seek advice from a child restraint fitter and consider their recommendations before using a seatbelt extender. If you use a seatbelt extender then ensure that the seatbelt buckle does not contact the child.
- Child restraints should always be correctly installed, properly adjusted and used as instructed by the manufacturer instructions.
- Ensure babies and toddlers are adequately shaded from direct sunlight through side or rear windows.
- Check the car is ventilated by opening windows or using the car's ventilation system taking in external air. Recirculation setting is not suitable for providing ventilation.
- THIS RESTRAINT MUST BE ATTACHED TO A CHILD RESTRAINT UPPER ANCHORAGE POINT IN THE CAR. REFER TO CAR OWNER'S HANDBOOK FOR LOCATION OF UPPER ANCHORAGE POINTS. REFER TO A CHILD RESTRAINT FITTING STATION IF NO UPPER ANCHORAGE POINTS ARE IN THE MOTOR CAR. Refer to pages 45 to 49.

SHOULDER HEIGHT MARKERS

Shoulder height markers are featured clearly on the child seat (as seen in diagram).



SHOULDER HEIGHT MARKERS

Upper Height
Marker

**SHOULDERS MUST BE
BELOW THIS LINE**

If your child's shoulders are above the upper marker they have outgrown the seat (see page 14).

When the child's shoulders reach this upper marker, or the child no longer fits in the child restraint, approximately 8 years of age, then the child must be moved to the next form of child restraint, see next page.

Lower Height
Marker

**SHOULDERS MUST BE
ABOVE THIS LINE**

The child's shoulders must be in-line or above this marker. If the child's shoulders are below then the child should remain rearward facing.

 **IMPORTANT:** Follow this advice.

**SHOULDERS MUST BE
BELOW THIS LINE**



**SHOULDERS MUST BE
ABOVE THIS LINE**

Child Use (Forward Facing)



Upper Height
Marker

Older Baby (Forward Facing)

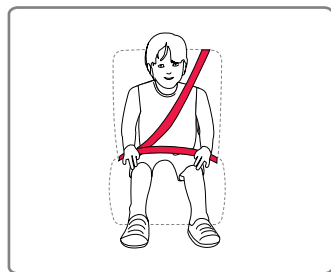


Lower Height
Marker

When your child has outgrown this seat, you can use:



Booster Seat

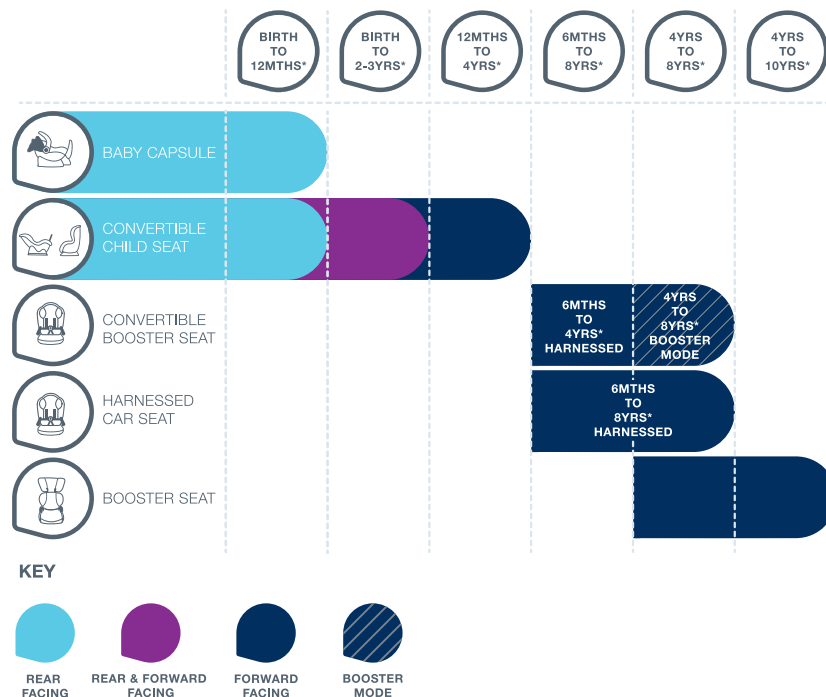


Vehicle seatbelt

- A dedicated booster seat suitable for a child until **10 years of age**. Or the vehicle's own seatbelt if appropriate.
- Or a child may use the vehicle seat and seatbelt without a booster seat if the child can pass the '5 Step Test'. The 5 steps are as follows;
 1. Can your child sit with their back against the vehicle seat?
 2. Do your child's knees bend in front of the edge of the seat cushion?
 3. Is the lap belt sitting low across your child's hips and touching their thighs?
 4. Does the sash belt sit across the middle of your child's shoulder?
 5. Can your child stay seated correctly like this for the entire trip without slumping?

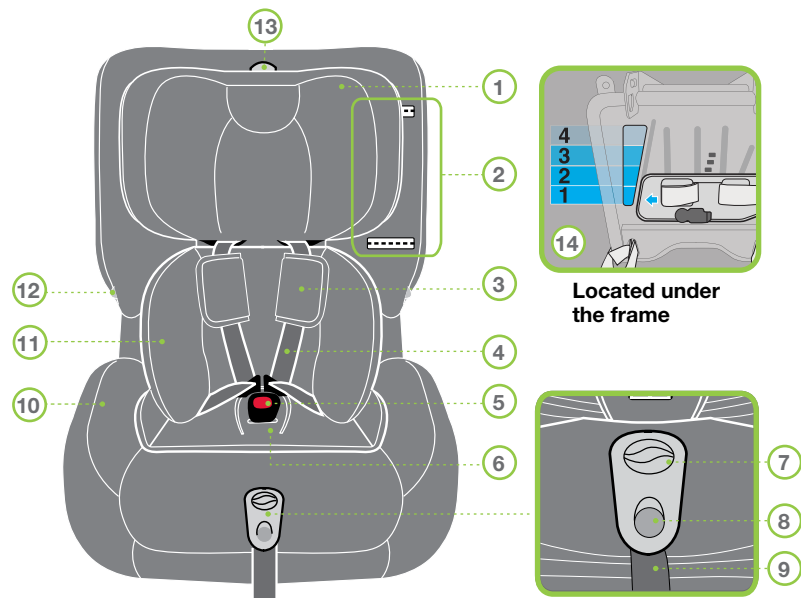
CHILD SEAT SUITABILITY GUIDE

These child restraints, when used correctly, allow the driver to meet the Australian Road Rules in each state.



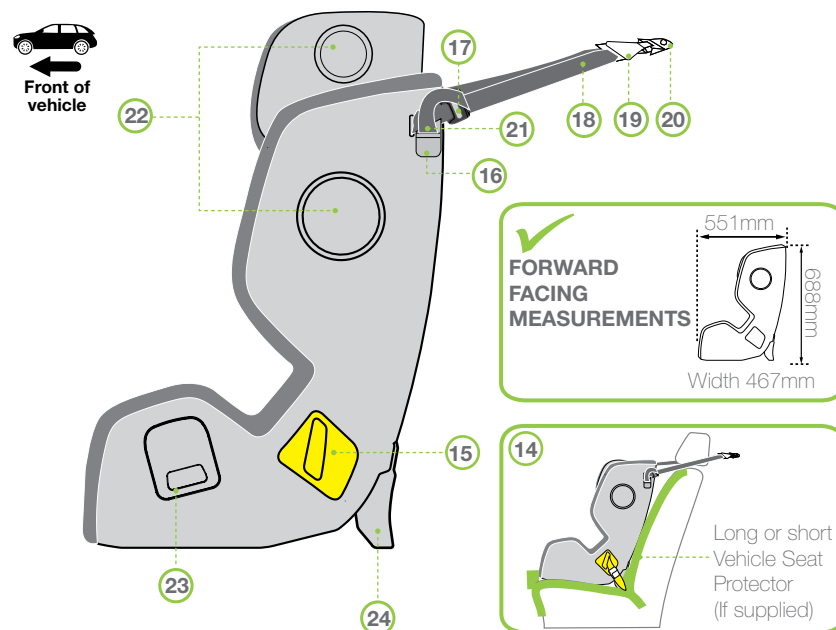
* Ages are an approximation. Refer to the shoulder height markers for progression to forward facing mode or graduation to next restraint.

CHILD SEAT FEATURES - FORWARD FACING



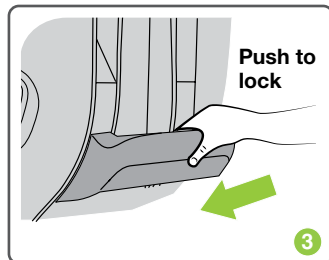
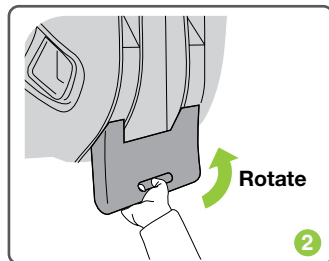
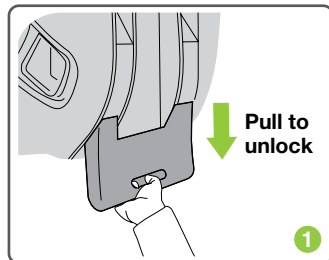
- 1. Adjustable Headrest
- 2. Shoulder Height Markers
- 3. Shoulder Pads
- 4. Harness
- 5. Release Buckle (Red button)
- 6. EZ Buckle
- 7. ClickTight™ Button
- 8. Harness Adjuster Button
- 9. Harness Adjuster Strap (lower)
- 10. Cover
- 11. Infant Insert
- 12. Buckle Tongue Holders
- 13. Headrest Adjuster
- 14. Grow-With-You™ Adjustable Crotch Buckle

CHILD SEAT FEATURES - FORWARD FACING



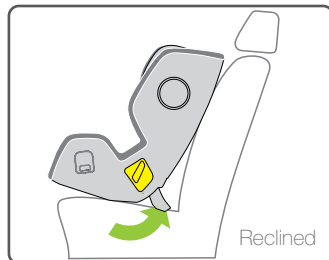
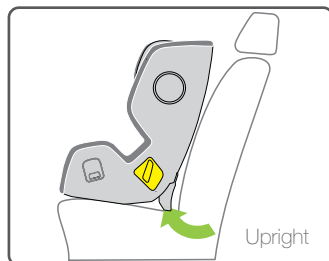
- 14. Vehicle Seat Protector (If supplied)
- 15. FORWARD FACING BELT PATH (Yellow)
- 16. Top Tether Storage Pocket and Instruction Manual Location
- 17. Top Tether Adjuster
- 18. Top Tether
- 19. Attachment Clip
- 20. Vehicle's Anchor Fitting
- 21. Top Tether Adjuster Strap
- 22. Advanced Side Impact Cushion Technology (SICT™)
- 23. Cup Holder
- 24. Recline Foot

INSTALLING INTO VEHICLE (FORWARD FACING) (UPRIGHT OR RECLINED)



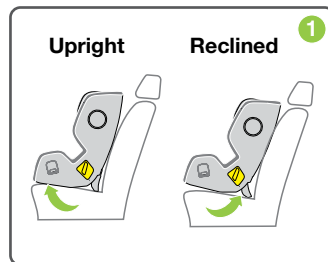
A. Determine whether an upright or reclined installation is preferred as shown.

B. To move the recline foot from upright to reclined mode or vice versa, pull the foot outwards to unlock it, then rotate the foot. Push to lock in place (steps 1-3).

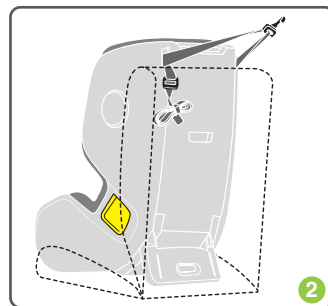


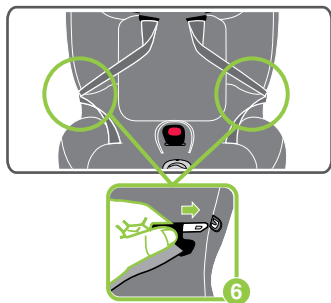
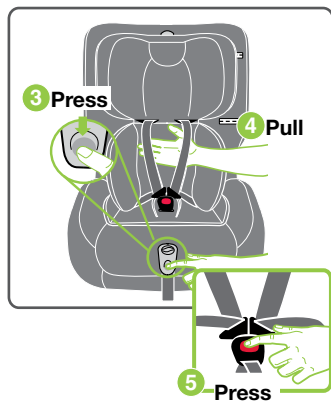
INSTALLING INTO YOUR VEHICLE:

Step 1. Choose vehicle seat position. Choose whether the seat will be upright or reclined.



Step 2. Ensure child seat is against vehicle seatback and top tether is not trapped behind seat. Place top tether and attachment clip over back of vehicle seat towards anchor fitting.





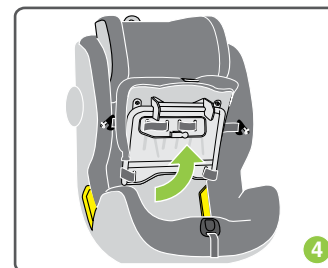
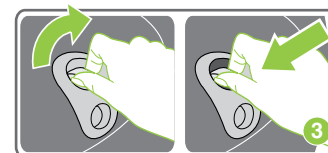
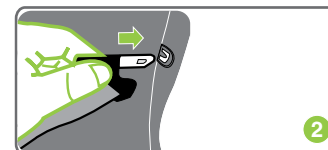
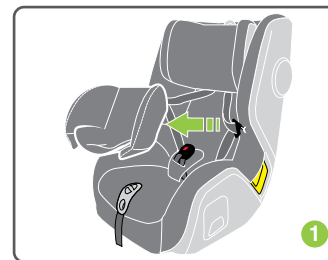
Step 3. Press harness adjuster button.

Step 4. Place your hand under both shoulder harness straps, then pull shoulder harness straps to lengthen.

Step 5. Disengage buckle by pressing red button.

Remove infant insert.

Step 6. Place buckle tongues into buckle tongue holders.



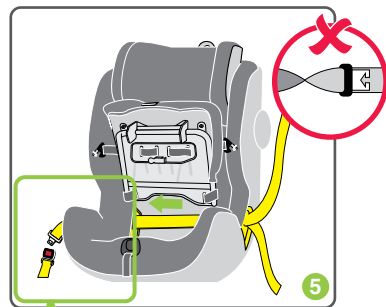
HOW TO INSTALL ClickTight™:

Step 1. Remove infant insert.

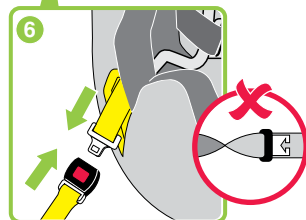
Step 2. Ensure buckle tongues are placed into buckle tongue holders prior to opening ClickTight™ frame.

Step 3. To open ClickTight™ frame, apply downward pressure to the seat whilst you twist and push the ClickTight™ button. Allow frame to lift.

Step 4. Open ClickTight™ frame fully.

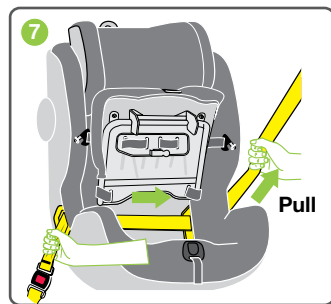


- Step 5.** Lengthen vehicle seatbelt.
Feed vehicle seatbelt through yellow FORWARD FACING BELT PATH guide, across the seat and through opposite belt guide.
Ensure the belt does not twist when routed across seat.

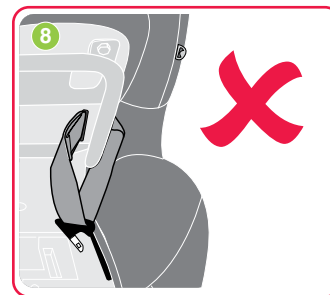


- Step 6.** Engage the vehicle seatbelt buckle and tongue securely.

ENSURE THERE ARE NO TWISTS IN SEATBELT. REMOVE SLACK.



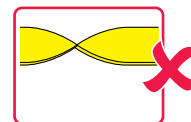
- Step 7.** Remove any slack from the vehicle seatbelt by pulling the webbing through the buckle, and back towards the sash-belt.
Hold the restraint firmly against the vehicle seat. While holding, pull up on the sash-belt to remove slack from the seatbelt. Feed sash-belt slack back into the seatbelt retractor.



- Step 8.** Ensure no part of the harness assembly is trapped under the ClickTight™ frame before closing.



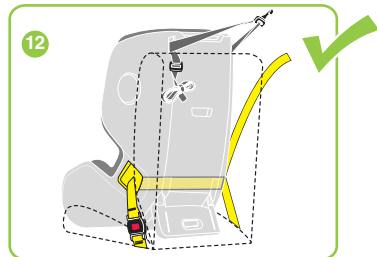
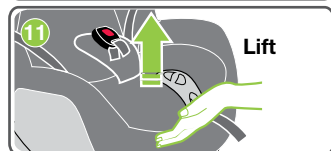
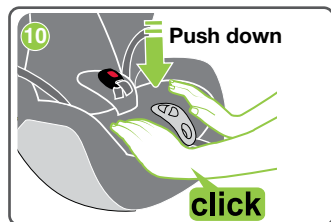
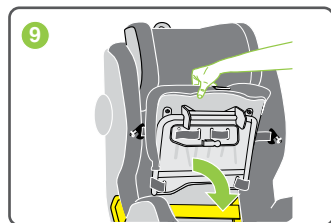
ALWAYS REMOVE SLACK FROM SEATBELT.



ENSURE THERE ARE NO TWISTS IN SEATBELT.



DO NOT TRAP HARNESS STRAPS OR TONGUE WHEN CLOSING FRAME.



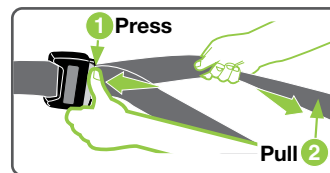
Step 9. Close ClickTight™ frame.

Step 10. Press down until it locks into place. if you need to apply excess force to close the ClickTight™ frame, ensure no part of the harness assembly is trapped under the ClickTight™ frame before closing

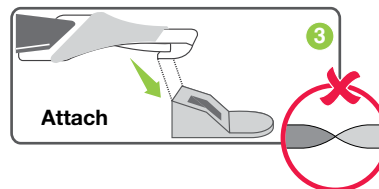
Step 11. Check if the ClickTight™ frame is locked by gently lifting as shown. Your seat should feel secure.

Step 12. You are now ready to install top tether. Refer to page 25.

HOW TO INSTALL THE TOP TETHER:

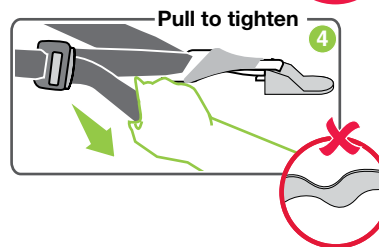


Step 1. Press top tether adjuster button and
Step 2. Lengthen top tether strap fully, ensure all unnecessary twists are removed.



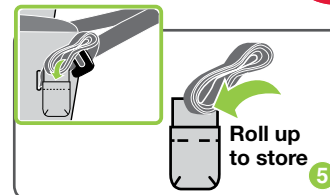
Step 3. Connect top tether attachment clip to vehicle anchor fitting.

ENSURE THE TOP TETHER STRAPS ARE NOT TWISTED.



Step 4. Pull top tether strap slack onto side of adjuster. Do not over tighten as it may cause your child seat to lift.

ALWAYS REMOVE SLACK IN THE TOP TETHER AND STORE STRAP.



Step 5. Roll up any excess strap and store in the pocket provided on the top tether strap.

⚠ CAUTION: CHILDREN CAN BE INJURED OR RESTRAINTS AND TOP TETHER STRAP DAMAGED BY UNSECURED CARGO IN A COLLISION. SECURE OR REMOVE HAZARDOUS CARGO BEFORE USING THIS CHILD RESTRAINT.

⚠ IMPORTANT:

The top tether strap must be fitted at all times.

Always secure the loose end of the top tether strap to prevent it hanging out of the car or being accessible by the child.

THIS RESTRAINT IS NOT SUITABLE FOR USE WHERE THE TOP TETHER STRAP MAY FALL INTO A SPLIT IN THE SEAT BACK OR OFF THE SIDE OF THE SEAT.

ALWAYS ATTACH TOP TETHER HOOK AND REMOVE SLACK IN THE TOP TETHER STRAP.

HOW TO USE - HEADREST AND SHOULDER HARNESS:

Step 1. Press harness adjuster button.

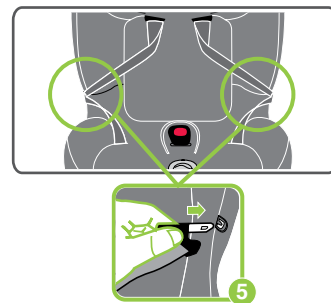
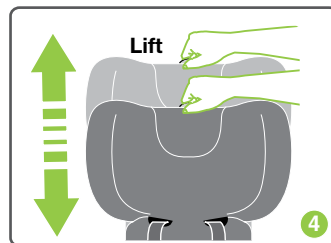
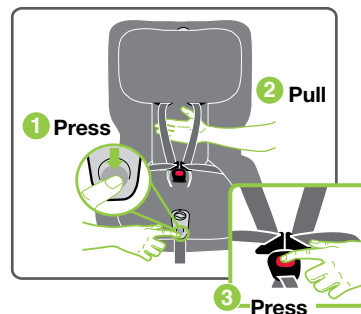
Step 2. Place your hand under both shoulder harness straps, then pull shoulder harness straps to lengthen.

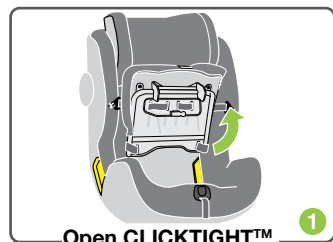
Step 3. Disengage buckle by pressing red button.

Step 4. Lift lever to adjust headrest/harness slots.

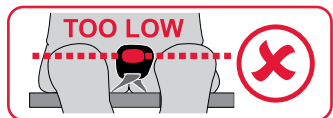
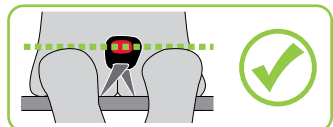
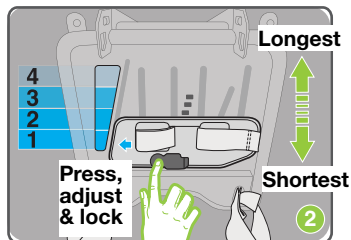
NOTE: Vehicle headrest may need to be removed before adjusting the headrest.

Step 5. Place buckle tongues into buckle tongue holders.





Open **CLICKTIGHT™**



ADJUSTING CROTCH BUCKLE HEIGHT:

Step 1. Lift headrest to maximum height and open ClickTight™ frame fully.

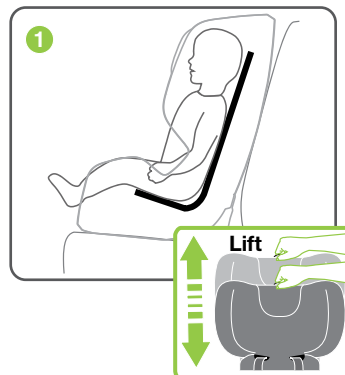
Step 2. To slide plate to desired crotch buckle height, push in lever to unlock and move plate up or down. Release lever and ensure it locks to prevent unwanted movement.

The centre of the buckle should be positioned approximately in line with the top of the thighs.

Close ClickTight™ frame when buckle height is selected.

Check buckle height with seated child and re-adjust if necessary and as the child grows.

ENSURE PLATE IS LOCKED TO PREVENT A SLACK HARNESS



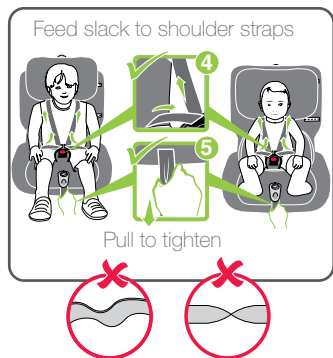
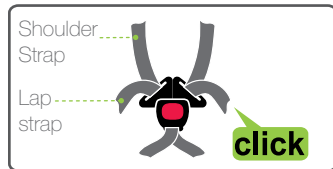
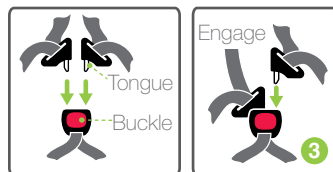
Step 1. Place your child into child seat. Ensure your child sits fully back without slouching. Lift lever to adjust headrest and harness slots.



Step 2. Adjust headrest height to suit child. The shoulder straps must be in the slots which are nearest to the child's shoulders, but not more than 25mm below the child's shoulders.

Always adjust the height of the shoulder straps as the child grows.

SETUP - ENGAGE BUCKLE AND CHECK



Step 3. Fit the shoulder straps over the child's shoulders ensuring they do not become twisted.
Engage both tongues into the buckle.

ENSURE BUCKLE IS ALWAYS CONNECTED DURING USE.

ENSURE ALL HARNESS STRAPS ARE NOT TWISTED.

Step 4. Remove all slack from the lap strap area (including behind child's bottom), by pulling up on the shoulder straps.

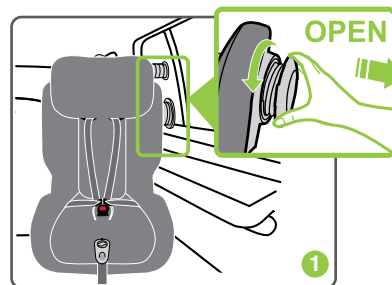
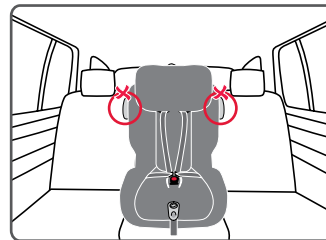
Step 5. Pull harness adjuster strap to tighten.
Ensure a firm but comfortable fit.

ENSURE ALL HARNESS SLACK IS REMOVED.

SETUP - ADVANCED SIDE IMPACT CUSHION TECHNOLOGY

OPEN ADVANCED SIDE IMPACT CUSHION TECHNOLOGY:

NOTE. The SICT™ system should not be used if the child seat is in the centre position.
For further information on SICT™ refer to page 7.



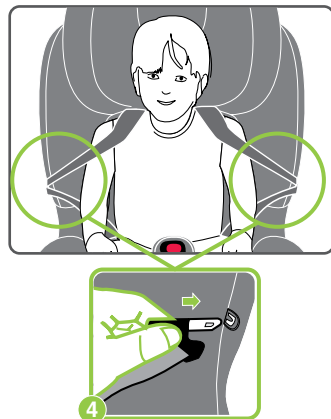
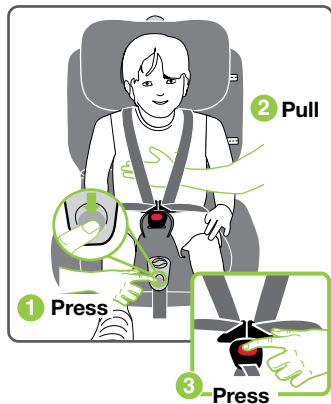
Step 1. Rotate the SICT™ anti clockwise to full extension on the preferred door side for both the torso and headrest.

Headrest SICT™ should only be used if it is exposed in the 5 highest positions of the headrest.

If at full extension the SICT™ makes contact with the vehicle interior, reduce the extension by rotating clockwise, keeping it as close as possible to full extension (finger clearance)

! WARNING:
DO NOT LEAVE CHILDREN UNATTENDED IN THE CAR.

SETUP - REMOVE CHILD FROM CHILD SEAT



REMOVING CHILD FROM CHILD SEAT:

Step 1. Loosen shoulder harness straps by pressing the harness adjuster button.

Step 2. Pull both shoulder harness straps evenly.

Step 3. Disengage buckle by pressing red button.

Step 4. Place harness buckles in buckle tongue holder.

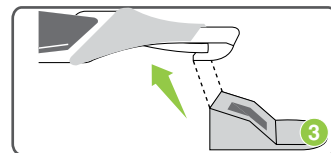
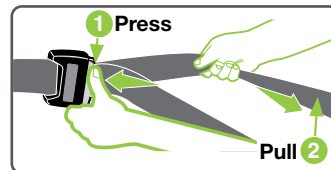
Remove child from child seat.

SETUP - REMOVE CHILD SEAT FROM VEHICLE

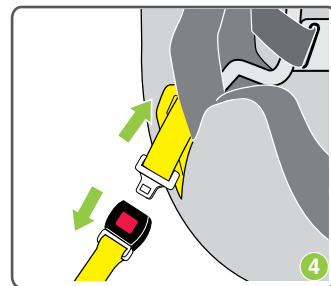
HOW TO REMOVE SEAT FROM VEHICLE:

Step 1. Press top tether adjuster button and

Step 2. Lengthen top tether strap fully.

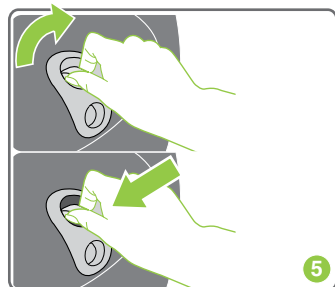


Step 3. Disconnect top tether attachment clip from vehicle anchorage fitting.

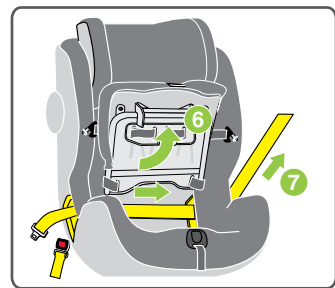


Step 4. Disengage the vehicle seatbelt buckle.

SETUP - REMOVE CHILD SEAT FROM VEHICLE



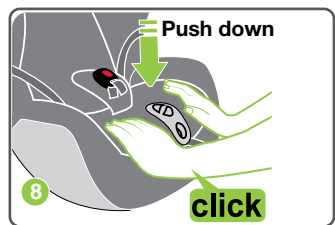
Step 5. To open ClickTight™ frame, twist and push the ClickTight™ button. Lift frame.



Step 6. Open ClickTight™ frame fully.

Step 7. Remove vehicle seatbelt from yellow FORWARD FACING BELT PATH.

NOTE: Ensure no part of the harness assembly is trapped under the ClickTight™ frame before closing



Step 8. Close ClickTight™ frame and press down until it locks into place.

SETUP - REMOVE CHILD SEAT FROM VEHICLE

CLOSE ADVANCED SIDE IMPACT CUSHION TECHNOLOGY :

Step 1. Rotate clockwise to close.



REGULAR CARE OF THIS RESTRAINT:

Please check the following items regularly to ensure the safety of your child.

- A. Check the condition of the harness straps, i.e. No damage or fraying.**
- B. Check the condition of the seat structure, i.e. No cracks or other forms of damage.**
- C. Check the harness adjuster is operating correctly.**
- D. Ensure the buckle is free of fluff, liquid or other matter that may enter the buckle opening. Clean the buckle if it is difficult to engage. See next page.**

Immediate repair is required if any of the above issues are observed. Contact Britax Customer Service 1300 303 330

- E. Regularly vacuum under the seat cover to remove accumulated food etc. Pay particular attention to Lower Adjuster area as food ingress can allow webbing to slip.**

CLEANING CHILD SEAT

HARDWARE: Use only mild soap to clean all metal and plastic parts of your child's restraint, using a damp sponge or cloth. Do not use chemicals or cleaning agents. Do not try to place any hardware into a washing machine.

STRAPS/HARNESS: We recommend spot cleaning straps and harness with a damp sponge or cloth using only cold or warm water. Never place any straps or harness into a washing machine or tumble dryer.

WASHING CARE FOR COVER

- GENTLE COLD MACHINE WASH
- DO NOT BLEACH, SOAK OR WRING
- DO NOT TUMBLE DRY
- DO NOT DRYCLEAN
- DRY FLAT IN SHADE
- DO NOT IRON

BUCKLE OPERATION

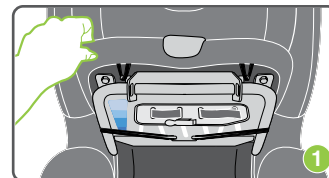
To ensure the buckle remains operational the inside of the buckle must be kept free of liquids, sand, dirt, fluff, food or similar substances. If the buckle is not operating or you do not hear a strong click when the second tongue is inserted then the buckle needs to be washed or replaced. The buckle is fully engaged when both tongues are inserted and a 'click' is heard. Contact Customer Service for assistance.

CLEAN HARNESS BUCKLE:

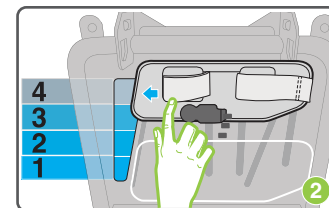
If sticky liquids such as milk, fruit juice, etc. get inside your harness buckle, it may become unreliable. An indication of an unreliable harness buckle is that you cannot hear a click when engaging the second harness tongue. To restore the harness buckle to good working order it needs to be cleaned as follows:

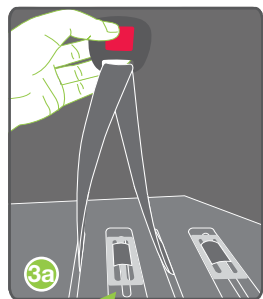
REMOVE THE HARNESS BUCKLE FOR CLEANING:

1. Remove the ClickTight™ frame cover, refer to page 41.



2. Open ClickTight™ frame and slide the adjuster to position 4.

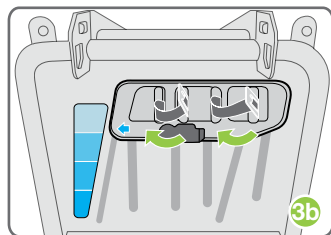




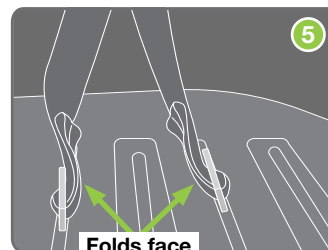
3a. With crotch buckle in 4th position, go to the top of the ClickTight™ frame, turn each metal 3 bar slide on its side, and push through the slots. Take care to keep webbing flat on 3 bar slides.



3b. From the underside of the ClickTight™ frame, slide the 3 bar slides back through the second slots to remove the crotch buckle.

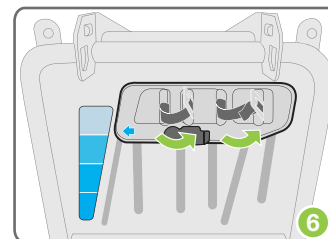


4. Place the harness buckle under warm (max. 40 degrees celsius) running water as shown. Let the water run through the mouth of the buckle for five minutes. Check the harness buckle is clean by engaging the harness tongues and buckle several times until you hear a click. If you still cannot hear a strong click then repeat the cleaning process several times.



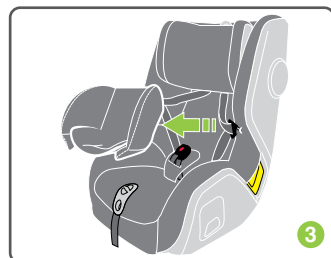
Folds face inwards

5. To refit the harness buckle, ensure the buckle is facing towards you (red button outwards) refer to image 3a. There are 4 slots in the seat plate. Counting from the left, feed each strap through the 1st and 3rd slot, as shown in image 5. The folds should be facing inwards, as shown.



6. From the underside of the seat plate and with the adjuster in position 4, feed each strap back through the remaining slots to the right.

If the harness buckle cannot be returned to its original working condition then contact Britax Customer Service for assistance.



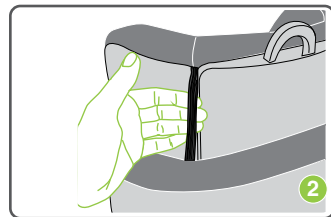
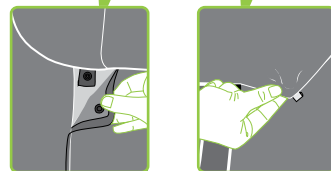
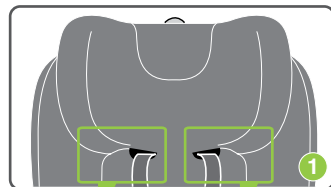
TO REMOVE COVER FOR WASH:

NOTE: There is no need to disconnect the shoulder harness assembly straps from restraint.

- Step 1.** Remove the restraint from vehicle.
- Step 2.** Disengage the harness tongues from the harness buckle.
- Step 3.** Remove any accessories, infant insert, crotch pad and shoulder pads (if supplied).

To remove headrest cover:

- Step 1.** Lift headrest to the highest position and unclip any press studs or hooks on both sides.

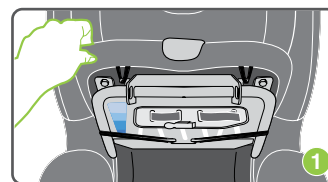
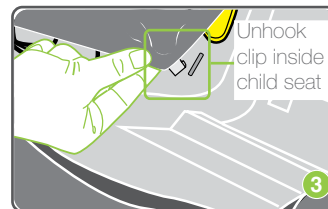
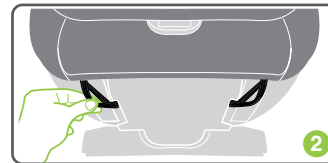
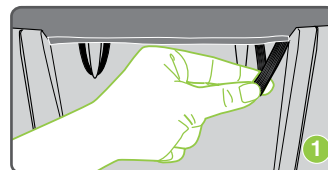


- Step 2.** Behind the headrest reveal the hidden elastic, lift out and remove elastic over and away from headrest.

Peel headrest cover away.

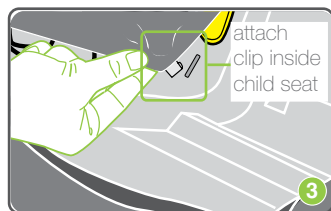
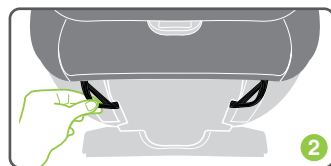
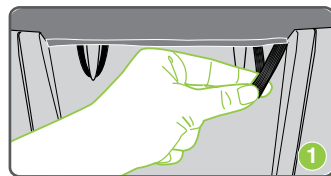
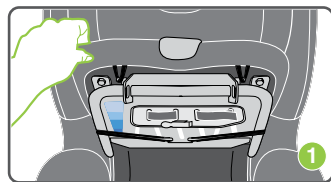
To remove cover:

- Step 1.** Lift headrest to the highest position. Open door at the back of the child seat and unhook elastic loops.
- Step 2.** Recline child seat to reveal elastic loops at the lower front of the child seat and remove.
- Step 3.** Open ClickTight™ frame and unhook clips inside the child seat as shown.
- Step 4.** Peel cover over headrest and harness adjuster button, feed through harness adjuster straps.



To remove ClickTight™ frame cover:

- Step 1.** Open ClickTight™ frame and unhook elastics from underneath.
- Step 2.** Feed over ClickTight™ button housing.

**TO REPLACE COVER:**

To replace ClickTight™ frame cover:

- Step 1.** Open ClickTight™ frame. Feed over ClickTight™ button housing. Loop elastics back on to clips provided.

To replace cover:

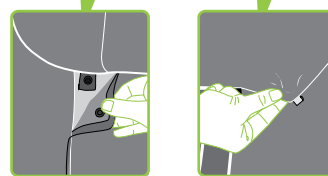
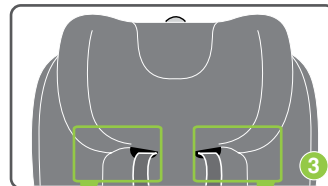
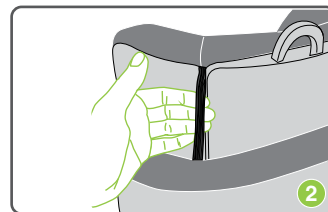
Stretch the cover over the headrest and harness adjuster button, pull the adjuster strap through the cover. Ensure none of the harness straps are twisted.

- Step 1.** Recline child seat to reveal hook at the lower front of the child seat and attach elastic loops.

- Step 2.** Lift headrest to the highest position. Open door at the back of the child seat and attach elastic loops to hooks provided.

- Step 3.** Open ClickTight™ frame and attach clips as shown.

To replace headrest cover:



- Step 1.** Lift headrest to the highest position. Stretch headrest cover over headrest.

- Step 2.** Replace elastic behind headrest into the recess.

- Step 3.** Clip press studs and hook the clips under headrest wings.

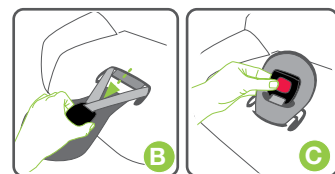
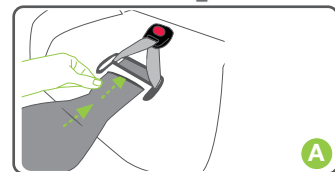
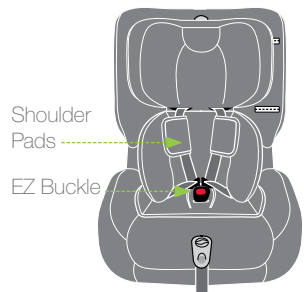
**ONLY USE BRITAX
SAFE-N-SOUND® SEAT COVERS
AND ACCESSORIES THAT ARE
DESIGNED AND TESTED FOR
USE WITH THIS PRODUCT.**

**VERY IMPORTANT:**

Only replace the cover with Britax® supplied replacement cover with identical shoulder height markers or a replacement cover meeting AS/NZS 8005.

The following instructions apply to accessories that may be supplied with this restraint at point of purchase. They are for comfort use only. If not, a variety of Britax Safe-n-Sound® accessories are available from various retailers of Britax Safe-n-Sound® products.

Use of aftermarket accessories, that is, accessories not provided with this child restraint can reduce the safety provided by the child restraint and may cause injury or death. Always follow the instructions covering the use of accessories provided with this child seat and the instructions provided with the accessory. If an aftermarket accessory is used that is not recommended by Britax, ensure that the accessory is compliant with AS/NZS 8005 and is stated as suitable for use with this specific child restraint.



SHOULDER PADS (If supplied)

Shoulder Pads give extra comfort for your child when using the harness. They're easy to remove and it makes washing them a breeze - unclip the studs to clean them and fit them back onto the shoulder harness straps once done.

EZ BUCKLE (If supplied)

The EZ Buckle makes it easier to place your child in and out of the child seat. It prevents your child from sitting on the buckle.

To remove

Feed the crotch buckle through the EZ buckle slot. Remove EZ Buckle.

To replace

Feed EZ Buckle through base cover front slot. Feed crotch buckle through EZ buckle slot. EZ Buckle is behind the buckle. See illustration C.

INFANT INSERTS (If supplied)

There are 2 types of infant inserts

Infant Insert

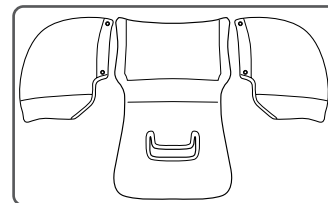
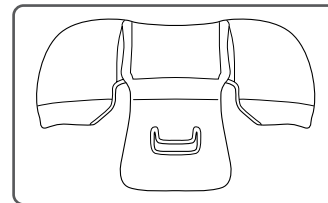
Designed to provide additional support for smaller babies. Discontinue use when the insert is a tight fit or creates discomfort for larger babies.

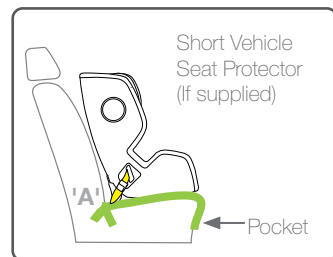
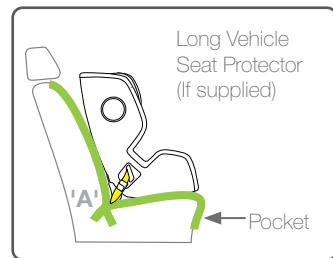
The Flexi Infant Comfort Insert

Designed to support smaller babies. The wings/side panels can be easily detached by unclipping the press studs, allowing you the flexibility to keep or remove panels as your baby grows. Discontinue use when the insert is a tight fit or creates discomfort for larger babies.

To replace infant insert

- Disconnect the buckle and place the insert under the shoulder and lap straps.
- Feed the crotch strap through the insert and re-connect buckle.
- If using the Flexi Infant Comfort Insert, re-attached side wings if required.





Note: Some Vehicle Seat Protector may not have pockets.

VEHICLE SEAT PROTECTOR (If supplied)

The Vehicle Seat Protector have been specifically designed to protect your vehicle seat when using your child seat.

Place pocket on edge of seat, smooth back toward seat join ('A') and fit in any excess Vehicle Seat Protector into the join of the child seat ('A').

CAUTION:

The Vehicle Seat Protector pocket is designed for small, light items. To avoid damage do not overload the pocket.

INSTALLATION OF VEHICLE UPPER ANCHOR POINT

Consult the vehicle owner's handbook for location of anchorage fittings or anchorage points and the possible use of spacers. Some vehicles may have an anchor fitting fitted by the vehicle manufacturer. If anchorage points cannot be found refer to car manufacturer or local child restraint fitting station or traffic authority for optimum position of upper anchorage point and the use of spacers.

TOP TETHER STRAP



IMPORTANT:

THE ATTACHMENT CLIP COVER MUST ALWAYS BE USED AS IT PREVENTS THE RISK OF INCORRECT FITMENT OF THE ATTACHMENT CLIP TO THE UPPER ANCHORAGE POINT. BEFORE EACH USE OF THE RESTRAINT ALWAYS ENSURE THAT THE ATTACHMENT CLIP IS CORRECTLY ENGAGED TO THE UPPER ANCHORAGE POINT AND NOT HOOKED TO OR FITTED TO, ANY OTHER OBJECT. THIS IS ESPECIALLY IMPORTANT IN VEHICLES SUCH AS STATION WAGONS, VANS, HATCH BACKS OR VEHICLES WITHOUT A FIXED PARCEL SHELF, SINCE THE ANCHOR POINT IS USUALLY NOT VISIBLE.

IMPORTANT INSTALLATION NOTE:

In some vehicles the upper anchorage point can only be installed in one way. Please refer to vehicle owner's handbook or a child restraint fitting station for correct method.

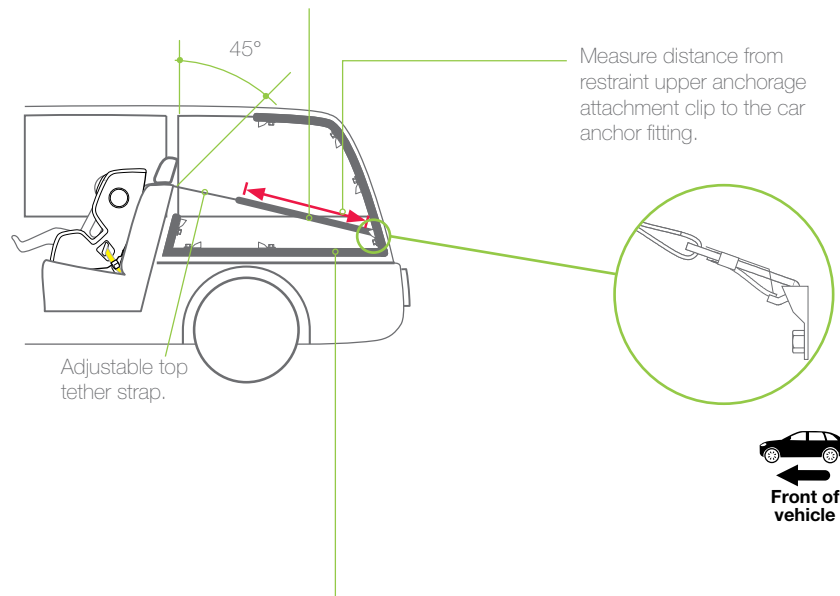
INSTALLATION OF VEHICLE UPPER ANCHOR POINT

Extension Straps

Length 300mm (Use Britax Safe-n-Sound® part 0035 or 0291).

Length 600mm (Use Britax Safe-n-Sound® part 0036 or 0290).

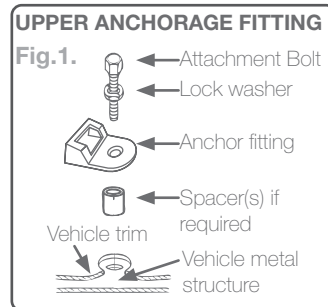
Available from all major child restraint retailers.



The shaded areas of this diagram illustrate the possible locations of the upper anchorage point (car anchor fitting). Within each shaded area is an upper anchorage point showing the correct way to install the fitting. Ensure the upper anchorage point is aligned as illustrated unless stated otherwise in the vehicle owner's handbook.

INSTALLATION OF VEHICLE UPPER ANCHOR POINT

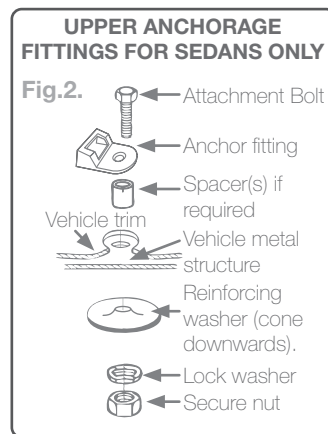
IF THE CAR IS FITTED WITH A CHILD RESTRAINT UPPER ANCHORAGE POINT



Locate the upper anchorage point behind the rear seating position. (Consult the car owners handbook for the location of the upper anchorage point). The upper anchorage point should be directly behind and central to the restraint. Remove thread plug from the parcel shelf/floor/roof, etc. and install attachment bolt and fitting as shown in Fig 1.

CAUTION: DO NOT OVERTIGHTEN ATTACHMENT BOLT. OVERTIGHTENING MAY FRACTURE OR BREAK BOLT. MAXIMUM TORQUE IS 20 Nm(14.75 ft.lb.)

Note: Minimum of five full turns of attachment bolt is required before tightening force is applied.



IF THE CAR IS NOT FITTED WITH A CHILD RESTRAINT UPPER ANCHORAGE POINTS

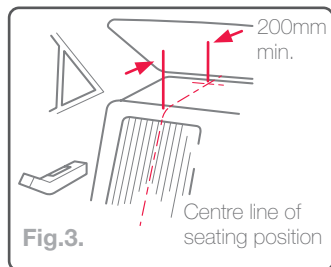
For Sedans only - Drill 9mm diameter hole in the parcel shelf on the centre line of the seating position as shown in Fig 3. Before drilling the hole, check the underside for accessibility. Install the attachment bolt as shown in Fig 2. It is recommended that this installation be carried out by a child restraint fitting station or licenced motor mechanic.

For vehicles other than Sedans - In Australia, consult your nearest child restraint fitting station or traffic authority for vehicle inspection to find the best, correct position for the placement of the upper anchorage point, and for the correct attachment bolt length and use of spacers. In New Zealand, consult the agent for the vehicle. Note to Queensland purchases: The installation of anchorage points must be approved by authorised officers appointed by Queensland Transport. Authorised officers can be sourced from all Queensland Transport Customer Service and Queensland Ambulance Service Centres.



NOTE: Marking on the top of a Grade 5 Bolt. Do not use any bolt without these marks.

ONLY USE A 5/16 UNC GRADE 5 BOLT. IF THE BOLT IS NOT THE CORRECT LENGTH THE CAR MANUFACTURER'S HAND BOOK CAN PROVIDE ADVICE ON THE CORRECT LENGTH BOLT.



WARNING

CHILD RESTRAINTS MUST NOT BE ATTACHED TO UNSOUND METAL OR TO WOOD, OR SYNTHETIC STRUCTURES. WHEN DRILLING 9 MM HOLE DO NOT DRILL THROUGH FUEL LINES, FUEL TANKS, ELECTRICAL WIRING, OR RADIO SPEAKERS. WEBBING STRAPS MUST BE PROTECTED FROM SHARP CORNERS AND EDGES. THE ANCHOR FITTING MUST BE USED ONLY AS DESCRIBED ABOVE. IT MUST NOT BE HOOKED ONTO ANY OTHER OBJECT.

CAR INSTALLATION ACCESSORIES (From retailers of Britax Safe-n-Sound® products)

EXTRA ANCHOR KITS: Available for using the restraint in additional cars.

Re-order no: 0038 or 0289

EXTENSION STRAPS: May be required for cars without a fixed parcel shelf.

Re-order no: 0035 or 0291 (length 300mm) or 0036 or 0290 (length 600mm)

CRASH EXCHANGE

We would never want you to experience an accident, but unfortunately accidents do happen.

If you experience an accident you may be eligible for a free replacement.

The Britax Safe-n-Sound® Crash Exchange Program is a voluntary program designed to ensure our children are safe and that any seat that may have experienced a severe crash is taken out of the market.

There is no method of determining if the restraint has been damaged in a severe crash, so the restraint should be destroyed as the crash may reduce the child restraint's ability to perform.

Since its inception in 2006, the Crash Exchange program has helped hundreds of families ensure their children have new restraints and that the restraints are not sold second hand placing others at risk.

If your restraint has been involved in a severe crash, you should destroy the restraint even if no damage is obvious. Restraints are eligible for exchange if they have been involved in a severe crash in Australia or New Zealand and meet all stated criteria. (A severe crash is considered as being one where the main body structure of the vehicle is distorted).

The Britax Safe-n-Sound® child safety restraints are available for exchange under this program.

Contact your insurance company for further details. Your insurance company may require you to keep the child restraint for assessment, **but do not use the child restraint after a severe crash.**

Refer to the Britax crash exchange website for more details

Our Crash Exchange Terms and Application form are accessible on our website. Please visit www.britax.com.au for further information.



TOP TETHER STAGE RELEASE

Your child seat is fitted with a Top Tether 'Stage Release' system.

1. Indicates how the strap looks when the seat is in good condition.
2. Indicates how the strap looks when the red stitching is torn and frayed. This means that the seat is not safe for use and you need to discontinue use of the product.



Refer to page 50 for information on crash exchange.



IMPORTANT:

Discontinue use of child seat if it has been involved in a severe crash, regardless of whether the coloured stitching has been ripped.

NOTICE TO INSURANCE COMPANY CHILD RESTRAINT INVOLVED IN AN ACCIDENT

All Britax Safe-n-Sound® child restraints are manufactured to Australian/New Zealand Standards AS/NZS1754-2013 which require us to advise users of child restraints to "Destroy the entire restraint if it has been in use in a severe crash, even if no damage is obvious". The joint Australian/New Zealand Standards committee CS/85, advise that this statement applies whether a child was in the child restraint or not. A severe crash, we consider as being one where the main body structure of the vehicle is distorted.

There is no method of determining if the restraint has been damaged and we concur with the Australian/New Zealand Standards in recommending destruction of the child restraint.

This notice is to advise you of the requirements of the Australian/New Zealand Standards and our obligation in complying with the standards.

Please assist the owner of this restraint in their claim.

AUSTRALIA

Britax Childcare Pty. Ltd.

A.B.N 55 006 773 600

Head office and registered address:

Level 4, 650 Lorimer Street, Port Melbourne, VIC, 3207

P.O. Box 5119 Garden City, VIC, 3207

Customer Service 1300 303 330

Email au-support@britax.com

www.britax.com.au

NEW ZEALAND

Britax Childcare (NZ) Ltd.

Customer Service 0508 688 822

Email nzoffice@britax.com

www.britax.com.nz

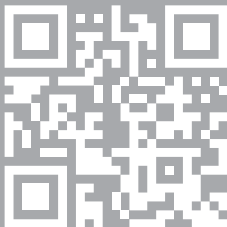
INTERNATIONAL ENQUIRIES

Contact your local Distributor





Series No. BS8700A-C20133



Scan QR code for
features, how to use
and installation.

WARRANTY

Our goods come with guarantees that cannot be excluded under the Australian Consumer Law. You are entitled to a replacement or refund for a major failure and compensation for any other reasonable foreseeable loss or damage. You are also entitled to have the goods repaired or replaced if the goods fail to be acceptable quality and the failure does not amount to a major failure. For the full terms of the Warranty refer to the Britax® website www.britax.com.au/service-support/warranty, www.britax.co.nz/service-support/warranty. In our constant pursuit of excellence, we may alter this product and specification without notice. This product may be covered by Australian and International patents and designs or pending applications. Britax Safe-n-Sound®, Safe-n-Sound®, Babylove® and Hipod® are registered trademarks of Britax® Childcare Pty Ltd. All Britax Safe-n-Sound®, Safe-n-Sound®, Babylove® and Hipod® model names are trademarks of Britax® Childcare Pty Ltd.

P/No.2203993/A