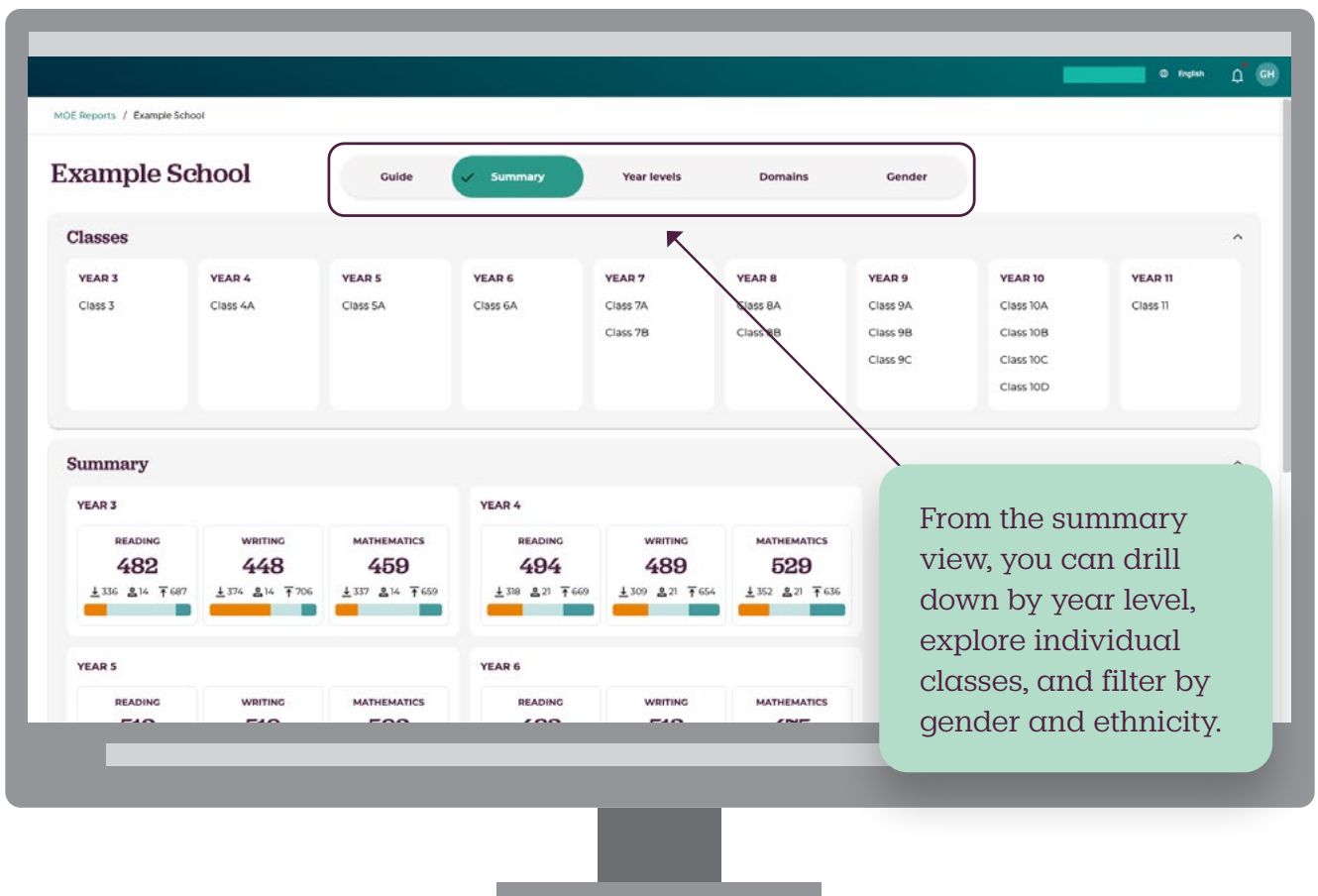
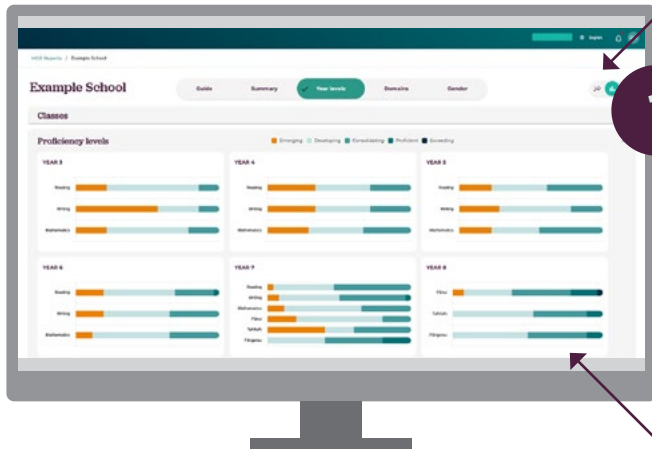


Key features of SMART reports for school leaders

Consistent, curriculum-aligned information for your school. SMART provides the kind of clear progress reporting that Leadership Teams and Boards need and provides the assessment evidence that will help inform your school's strategic and annual plans, and twice-yearly reporting to parents and whānau.



Information can be shown in a chart view, bar graph view or table view. This example shows the bar graph view.



Year levels

This view shows distribution across progress descriptor levels across each year group in your school. You can see at a glance how students at each year level are tracking in reading, writing, mathematics, pānui, tuhituhi, and pāngarau, and switch between chart, bar graph, and table views depending on what's most useful.

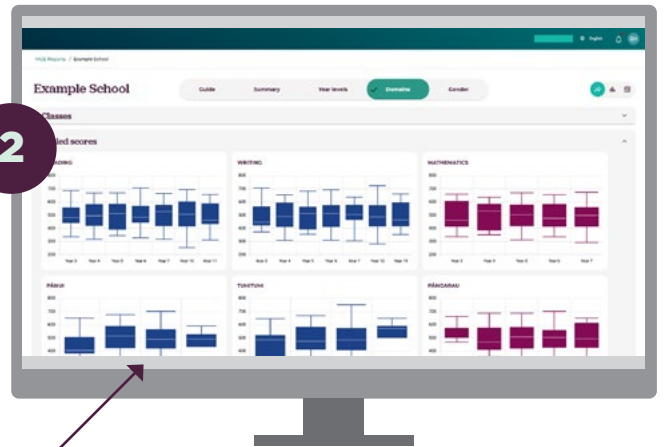
Visualisation showing information by year level

Strands/Elements

This view lets you compare performance across strands/elements (such as reading, writing, and mathematics) side by side for each year level. It helps you identify where particular strands/elements may need attention across the school, or where strengths are emerging.

Scaled scores, which place raw scores on a measurement scale so results can be compared fairly, show the spread of student achievement within each strand/element, making it easier to see patterns and variation.

This example shows the box and whisker chart view



Demographics

This view lets you break down school-level data by student demographics, such as gender or ethnicity, for each year level and domain. It can help you see where different groups of students are tracking, identify where gaps may be emerging, and inform decisions about targeted support or resourcing.

This information is shown in the table view.

The screenshot shows the dashboard with the 'Demographics' tab selected, displaying a table view. The table is organized by year level (YEAR 3, YEAR 4, YEAR 5) and domain (Reading, Writing, Mathematics). For each domain, it shows data for 'School', 'Female', and 'Male'. A purple circle with the number '3' is overlaid on the top right of the dashboard.

Year Level	Domain	School	Female	Male
YEAR 3	Reading	100	100	100
	Writing	100	100	100
	Mathematics	100	100	100
YEAR 4	Reading	100	100	100
	Writing	100	100	100
	Mathematics	100	100	100
YEAR 5	Reading	100	100	100
	Writing	100	100	100
	Mathematics	100	100	100

For 2026 only, there will be a six-week period after the assessment window closes where the information will be processed to create more detailed scaled-score reports.

Real assessment data is used to make sure questions are set at the right level of difficulty – e.g. a Year 3 assessment item is assessing the Year 3 curriculum. This work only needs to happen once. This is similar to what happened when e-asTTle was first introduced.

SMART is designed to help every student move forward in their learning by giving you clear insights into their strengths, needs, and next steps.

How can I use this data for reporting to my Board?

SMART's school-level views are designed to support the kind of progress reporting Boards need. You can use the year level and strands/elements views to show how cohorts are tracking, identify areas of strength or concern, and demonstrate how resources are being directed. This information helps give effect to your school's responsibilities around monitoring student achievement and progress against the curriculum, and can feed directly into your strategic and annual planning. The data complements your school's own assessment practices and professional judgement.

How do I share progress information with parents and whānau?

SMART includes tools to support reporting to parents and whānau. After each assessment window, summary information is available in clear, accessible language that you can share alongside your school's existing reporting processes, whether that's through a combination of written reports, parent-teacher conferences, or your school's communication channels.

Can I see individual class or teacher data?

Yes. From the summary view, you can drill down into individual classes within each year level. This is designed to support professional conversations with teachers about how students are tracking and where additional support may be needed.

Can I see how different groups of students are progressing?

Yes. The demographics view lets you filter data by factors like gender and ethnicity across year levels and strands/elements. This can help you identify where particular groups may need additional support and inform how you direct resources or professional development across the school.

How do these reports differ from the teacher view?

Teachers see class-level reports designed to inform day-to-day teaching, including next learning focus, gaps, and demonstrated proficiency for their students. As a school leader, you see aggregated data across the whole school. You can filter by year level, strand/element, or gender to identify patterns and inform resourcing, professional development, and strategic planning.



How will you protect my school's data?

All SMART data will be stored securely in Aotearoa, with backups for disaster resilience and recovery stored in Australia.

The Ministry is kaitiaki of all student and ākonga data in SMART. We have robust policies, systems, and safeguards in place to ensure the data is securely protected, ethically managed, and used only in ways that support learners and align with the Ministry's responsibilities to deliver a world leading education system.

Is SMART required for schools and kura in 2026?

No. SMART is one of three approved tools that schools and kura can choose from to meet assessment requirements in 2026.

Schools decide which tool best fits their needs. You can find more information about assessment requirements on Tāhūrangi.

SMART launches for all schools and kura in March 2026

Find out more on Tāhūrangi

<https://newzealandcurriculum.tahurangi.education.govt.nz/5637300577.p>